

Performance Report

Mark Garrick
Director of Strategy and Quality
Development

4 Hour Wait Performance

National Performance:
92.8%

Good Hope Type 1

89.3%



-2.3pp vs. May 20
-2.3pp vs. Jun 19

Heartlands Type 1

90.5%



+5.9pp vs. May 20
+25.4pp vs. Jun 19

QEHB Type 1

90.4%



+0.3pp vs. May 20
+26.0pp vs. Jun 19

Solihull Type 3

-

UHB Trust

81 / 114

90.6%



+0.8pp vs. May 20
+22.1pp vs. Jun 19

System

70 / 114

92.3%



+3.5pp vs. May 20
+11.6pp vs. Jun 19

Average Time in A&E

Good Hope Type 1

169 mins



+2 mins vs. May 20
-112 mins vs. Jun 19

Heartlands Type 1

150 mins



-23 mins vs. May 20
-111 mins vs. Jun 19

QEHB Type 1

163 mins



+2 mins vs. May 20
-97 mins vs. Jun 19

Solihull Type 3

-

Attendances

UHB

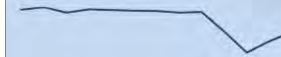
159 mins



-5 mins vs. May 20
-92 mins vs. Jun 19

UHB (average daily)

812.5 pd



+132.3 pd vs. May 20
-341.8 pd vs. Jun 19

- 4 hour performance continued to improve and was 22.1pp higher than June 2019.
- Attendances were 19.4% higher than May but were still 29.6% lower than the previous year.
- Heartlands had a significant improvement in performance at 90.5%. This was its highest performance in the last four years.
- Overall, the average time spent in A&E reduced by 5 mins, compared to May.

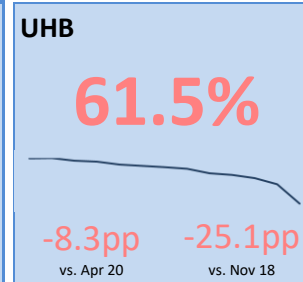
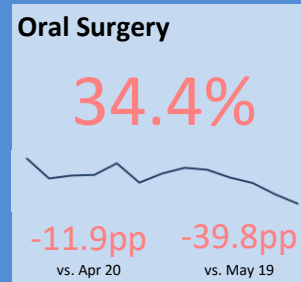
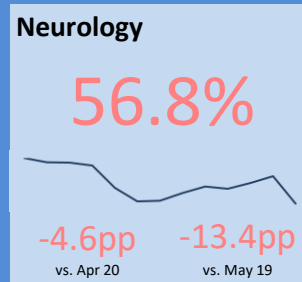
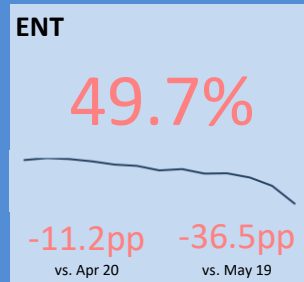
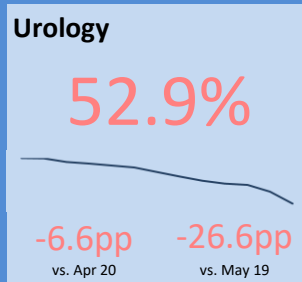
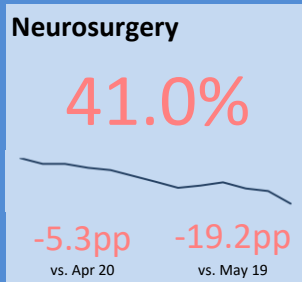
- In June 3.3% of attendances had 'COVID-19 like presentation' compared to a peak of 16.2% in April.
- Ask A&E usage fell by 33.4% compared to May with 62.9% of patients using it redirected to another service other than A&E.
- The restructure of ED at BHH has restricted the assessment cubicles, resulting in some delays to be seen. Estates modifications are in train to address.

Referral to Treatment Time

May 2020

Incomplete Pathway Performance

National Performance:
62.2%



Longer Waits

Waits over 52 weeks

	No.	Ch'nge
Urology	97	+56
ENT	85	+46
Gen. Surg.	44	+39
Other	36	+24
Neurosurgery	36	+19
UHB	355	+222

Waits over 40 weeks

	No.	Ch'nge
Urology	697	+232
Other	429	+171
ENT	410	+152
Gen. Surg.	388	+171
Ophthalm.	290	+179
UHB	3,484	+1,293

Waits over 18 weeks

	No.	Ch'nge
ENT	4,401	+1,059
Ophthalm.	3,849	+702
Urology	3,196	+465
Gen. Surg.	2,656	+533
Neurology	1,771	+223
UHB	32,511	+6,196

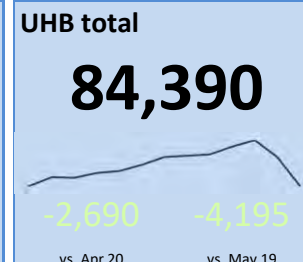
Waiting list size

Largest lists

	No.	UHB%
Ophthalm.	8,919	10.6%
ENT	8,755	10.4%
Urology	6,779	8.0%
Gastro.	9,215	7.4%
Gen. Surg.	6,197	7.3%
UHB	84,390	

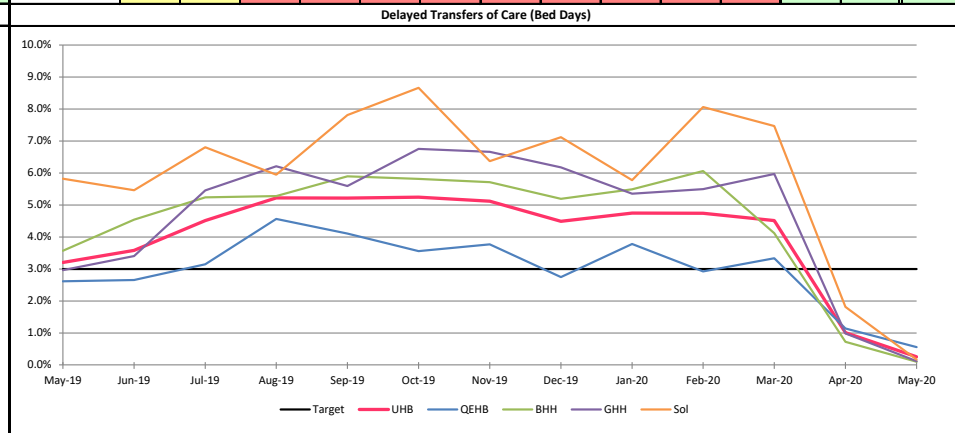
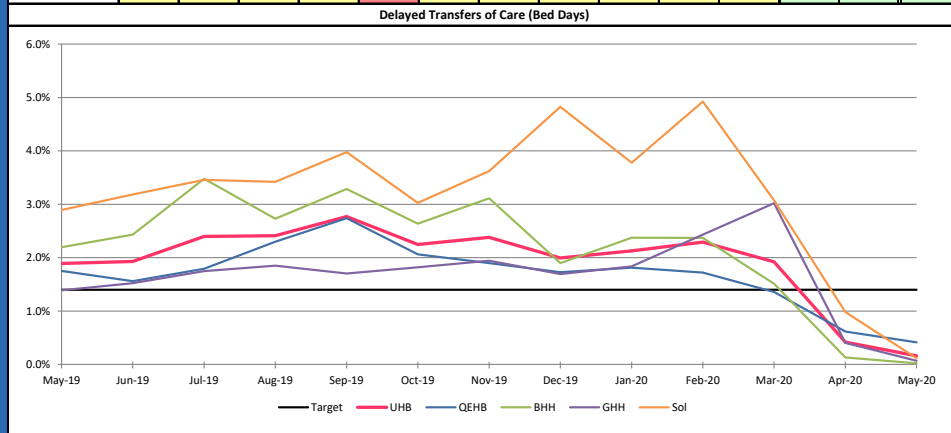
Monthly change

	No.	%
ENT	+209	+2.5%
Cardiology	+140	+6.7%
Neurology	+88	+2.2%
Urology	+38	+0.6%
Gen. Medicine	+23	+18.7%
UHB	-2,690	-3.1%



- Overall incomplete RTT performance deteriorated to 61.5%. All specialties had a deterioration in performance.
- Cancellations of elective surgery and outpatient appointments in response to COVID-19 continue to significantly affect performance.
- There were 355 x 52 week breaches in May.
- The RTT waiting list size fell in May by 2,690 compared to the previous month. Referrals in May were 24.4% lower than the previous month.

Delayed Transfers of Care (NHS & Joint)													Latest Month:		0.2%		Delayed Transfers of Care (All)													Latest Month:		0.3%	
Responsible Director: Chief Operating Officer													Target:		1.4%		Responsible Director: Chief Operating Officer													Target:		3.0%	
	May 19	Jun 19	Jul 19	Aug 19	Sep 19	Oct 19	Nov 19	Dec 19	Jan 20	Feb 20	Mar 20	Apr 20	May 20	YTD		May 19	Jun 19	Jul 19	Aug 19	Sep 19	Oct 19	Nov 19	Dec 19	Jan 20	Feb 20	Mar 20	Apr 20	May 20	YTD				
QEHB	1.8%	1.6%	1.8%	2.3%	2.7%	2.1%	1.9%	1.7%	1.8%	1.7%	1.4%	0.6%	0.4%	0.5%	QEHB	2.6%	2.7%	3.1%	4.6%	4.1%	3.6%	3.8%	2.7%	3.8%	2.9%	3.3%	1.1%	0.6%	0.8%				
BHH	2.2%	2.4%	3.5%	2.7%	3.3%	2.6%	3.1%	1.9%	2.4%	2.4%	1.5%	0.1%	0.0%	0.1%	BHH	3.6%	4.5%	5.2%	5.3%	5.9%	5.8%	5.7%	5.2%	5.5%	6.1%	4.1%	0.7%	0.1%	0.4%				
GHH	1.4%	1.5%	1.7%	1.9%	1.7%	1.8%	1.9%	1.7%	1.8%	2.4%	3.0%	0.4%	0.1%	0.2%	GHH	3.0%	3.4%	5.5%	6.2%	5.6%	6.8%	6.7%	6.2%	5.4%	5.5%	6.0%	1.0%	0.1%	0.5%				
Solihull	2.9%	3.2%	3.5%	3.4%	4.0%	3.0%	3.6%	4.8%	3.8%	4.9%	3.1%	1.0%	0.1%	0.5%	Solihull	5.8%	5.5%	6.8%	5.9%	7.8%	8.7%	6.4%	7.1%	5.8%	8.1%	7.5%	1.8%	0.2%	1.0%				
UHB	1.9%	1.9%	2.4%	2.4%	2.8%	2.2%	2.4%	2.0%	2.1%	2.3%	1.9%	0.4%	0.2%	0.3%	UHB	3.2%	3.6%	4.5%	5.2%	5.2%	5.2%	5.1%	4.5%	4.7%	4.7%	4.5%	1.0%	0.3%	0.6%				



- The overall percentage of NHS and joint delays in May improved to 0.2%.
- The total percentage delay improved by 0.7pp to 0.3%.
- Delays in the Trust are at their lowest levels due to high levels of discharges and a reduction in admissions.
- All sites had an improved performance in their delays.

VTE Screening

Latest Month:

98.7%

Responsible Director: Medical Director

Clinical Quality

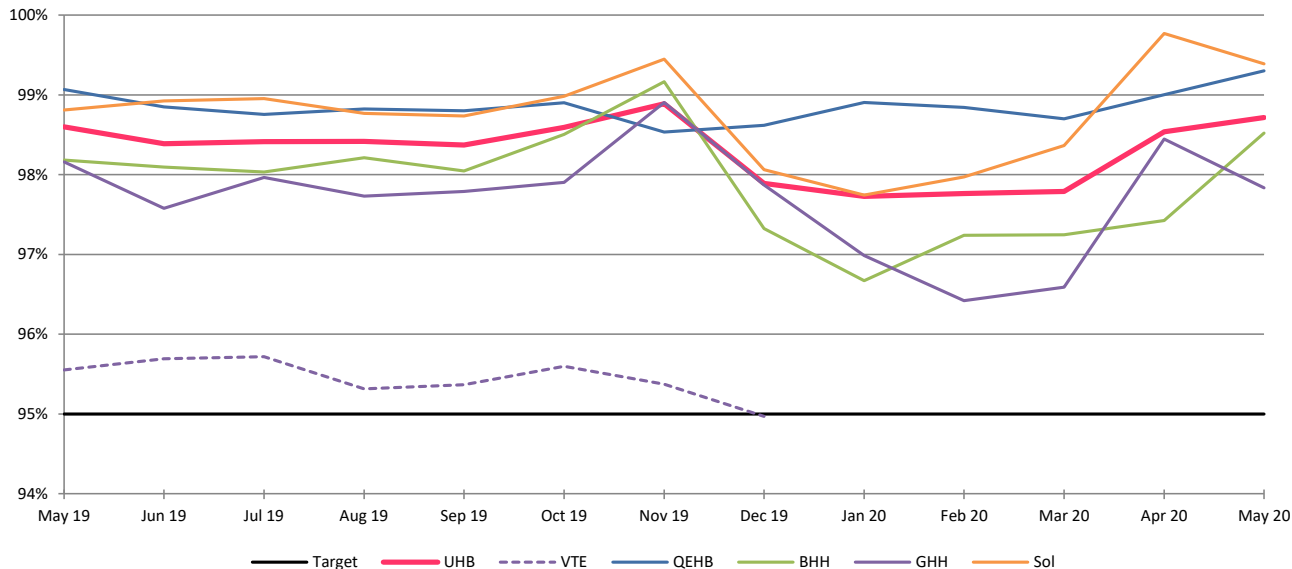
Target:

95%

	May 19	Jun 19	Jul 19	Aug 19	Sep 19	Oct 19	Nov 19	Dec 19	Jan 20	Feb 20	Mar 20	Apr 20	May 20	YTD
QEHB	99.1%	98.8%	98.8%	98.8%	98.8%	98.9%	98.5%	98.6%	98.9%	98.8%	98.7%	99.0%	99.3%	99.2%
BHH	98.2%	98.1%	98.0%	98.2%	98.0%	98.5%	99.2%	97.3%	96.7%	97.2%	97.2%	97.4%	98.5%	98.1%
GHH	98.2%	97.6%	98.0%	97.7%	97.8%	97.9%	98.9%	97.9%	97.0%	96.4%	96.6%	98.4%	97.8%	98.1%
Sol	98.8%	98.9%	99.0%	98.8%	98.7%	99.0%	99.4%	98.1%	97.7%	98.0%	98.4%	99.8%	99.4%	99.6%
UHB	98.6%	98.4%	98.4%	98.4%	98.4%	98.6%	98.9%	97.9%	97.7%	97.8%	97.8%	98.5%	98.7%	98.6%

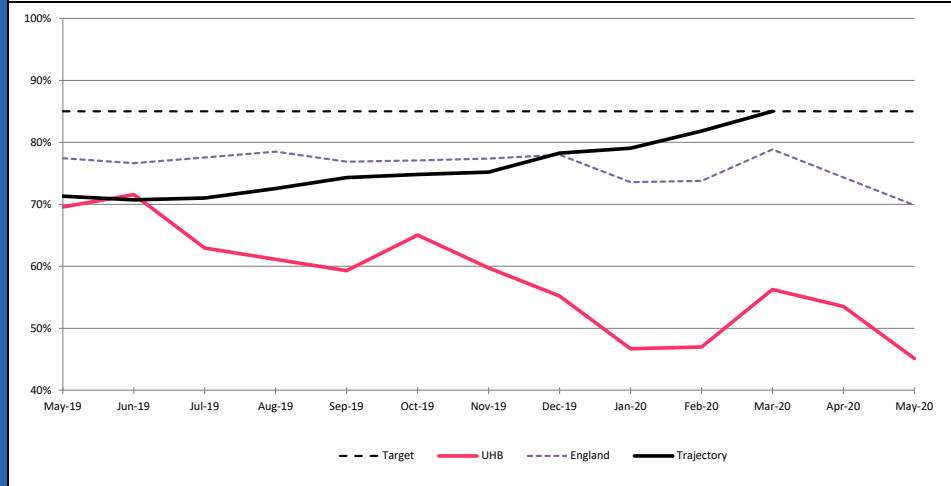
- Performance for the Trust remained above target at 98.7%.

VTE Screening

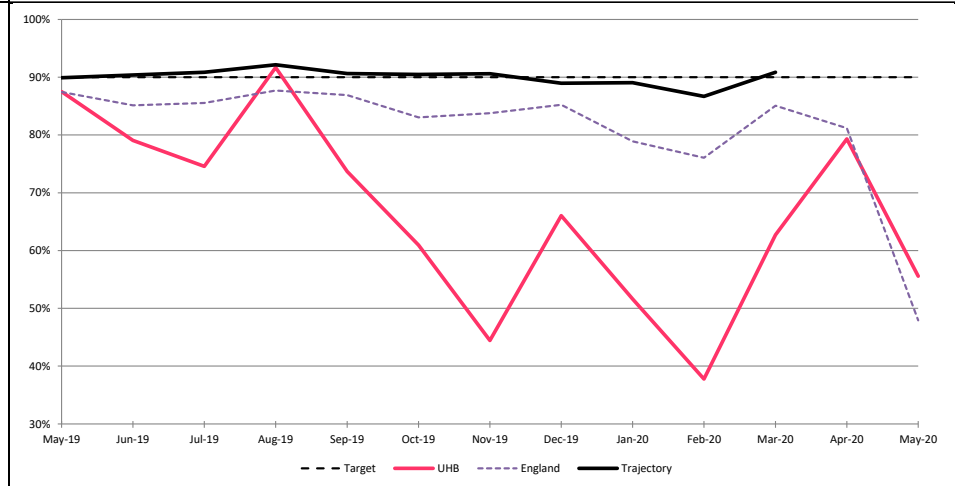


Cancer - 62 Day GP Referrals													Latest Month:		Cancer - 62 Day Screening													Latest Month:	
Responsible Director: Chief Operating Officer					NHS Oversight Framework			Latest mth trajectory:		Target:			85%		Responsible Director: Chief Operating Officer					NHS Oversight Framework			Latest mth trajectory:		Target:			90%	
May 19	Jun 19	Jul 19	Aug 19	Sep 19	Oct 19	Nov 19	Dec 19	Jan 20	Feb 20	Mar 20	Apr 20	May 20	YTD	May 19	Jun 19	Jul 19	Aug 19	Sep 19	Oct 19	Nov 19	Dec 19	Jan 20	Feb 20	Mar 20	Apr 20	May 20	YTD		
69.6%	71.6%	63.0%	61.1%	59.3%	65.0%	59.7%	55.2%	46.7%	47.0%	56.3%	53.5%	45.1%	49.9%	87.5%	79.1%	74.6%	91.7%	73.7%	60.9%	44.4%	66.0%	51.6%	37.8%	62.7%	79.3%	55.6%	76.1%		

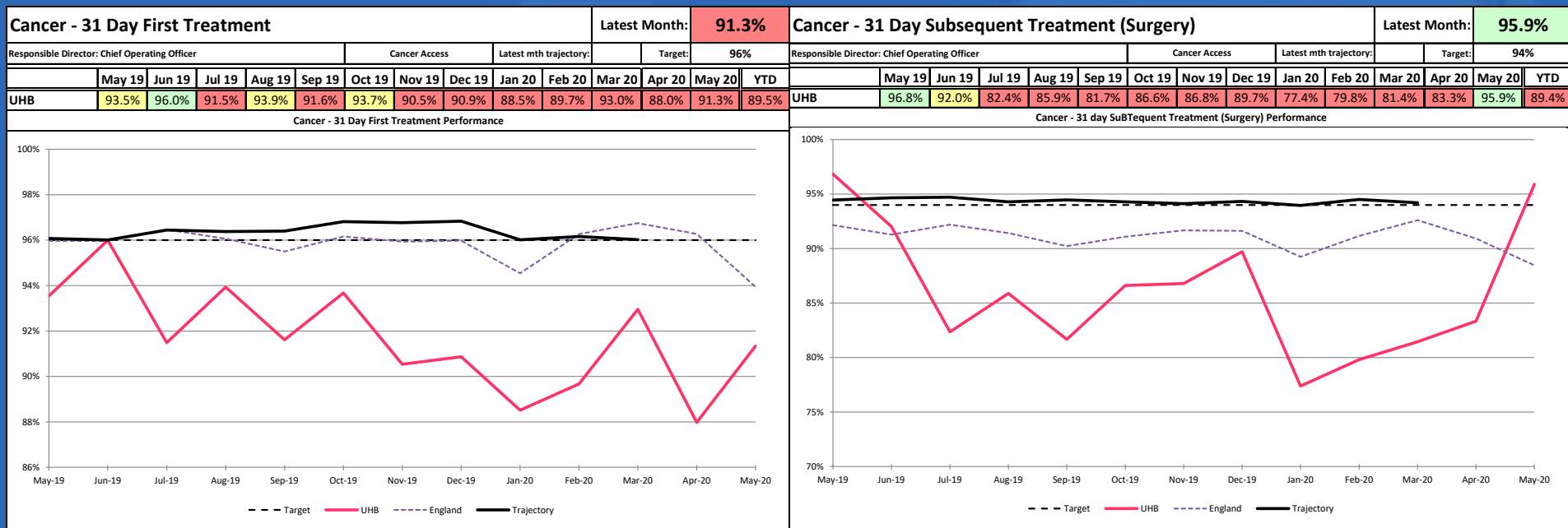
Cancer - 62 Day GP Referral Performance



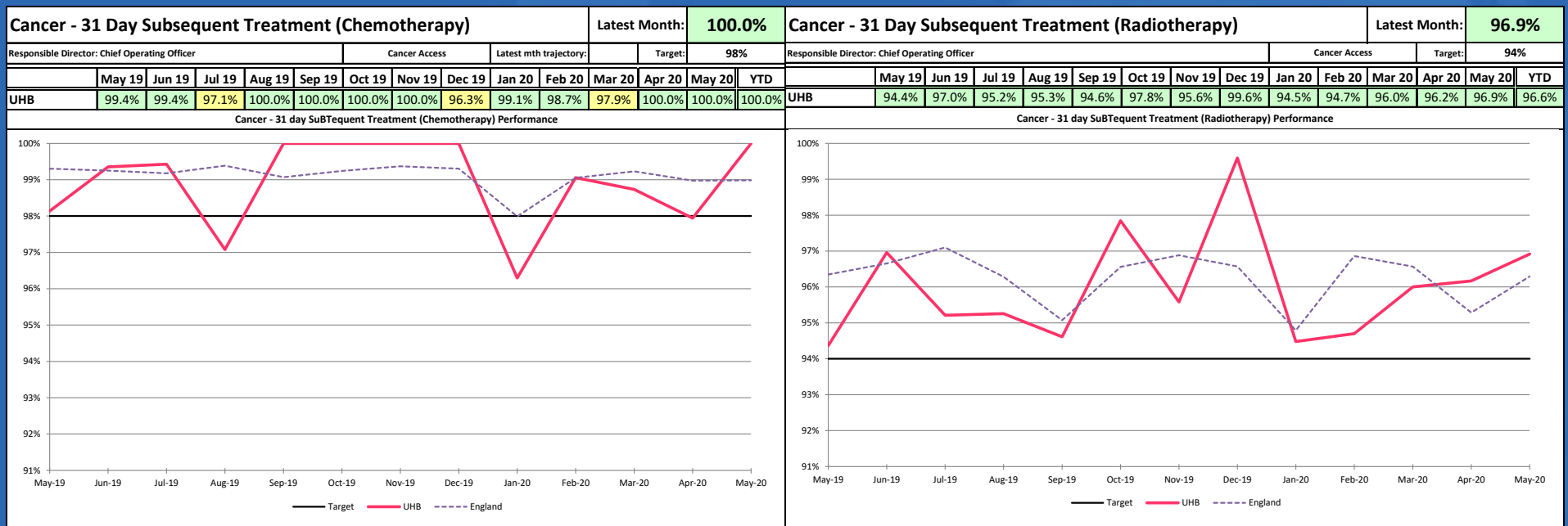
Cancer - 62 Day Screening Performance



- The Trust's overall 62 day performance for both GP referrals and screening fell to 45.1% and 55.6%, respectively.
- The majority of pathways continue to be affected by the impact of contracted capacity in diagnostics and elective theatres, although there remain process for clinical prioritisation and safety netting of patients that can be safely deferred.
- Performance continue to be impacted by severe capacity constraints stemming from the organisation's response to the COVID-19 pandemic.
- Elective capacity is now opening back up, albeit at reduced levels with cancer patients likely to make up the majority of the high priority elective surgery cohort.



- 31 day first treatment performance improved by 3.3pp to 91.3%.
- Subsequent surgery performance for the Trust improved to 95.9% with the performance above the national target.
- All cancer cases are being clinically prioritised in line with trust-wide approach to maximising theatre capacity in order to ensure most urgent cases are treated irrespective of waiting time.



- 31 day subsequent chemotherapy performance had an excellent performance with no breaches recorded for the second consecutive month.
- 31 day subsequent radiotherapy performance improved to 96.9%.