

Quality & Performance Report

Appendix 1

Mark Garrick

Director of Strategy &
Quality Development

Material exceptions to report

Performance Summary

A&E

- Attendances in January were 8.0% lower than December and 33.9% lower than January 2020.
- 4 hour performance in January of 59.3% was 6.9 percentage points lower than December.
- There were eight 12 hour trolley waits reported over the month with five of those relating to a lack of non-COVID (cold) beds and two delays transferring patients to mental health services.
- There was a significant increase in pressure from COVID-19 patients with 12.3% of attendances in January having 'COVID-19 like presentation' and 107 patients each day testing positive in the Trust's Emergency Departments.

Cancellations & Elective care

- Pressure from COVID-19 led to the cancellation of a significant proportion of elective surgery during December; this was in advance so on the day cancellations remained relatively low at 78.
- There were 86 breaches of the 28 day guarantee.
- RTT performance fell 1.5pp to 63.4% and the number of patients who had waited longer than 52 weeks for treatment increased to 7,294.
- The waiting list grew by 12.4% over the month to stand at 124,456 at month-end; there are now a third more patients waiting than in December 2019.

Cancer

- Two week wait performance for suspected cancer patients deteriorated 2.3pp whilst breast symptomatic performance increased by 5.2pp.
- 31 day first treatment performance increased by 4.7pp and subsequent surgery increased by 2.0pp; activity for both these measures remains high.
- The cancer 62 day GP target increased 5.1pp whilst performance against the screening target fell 13.0pp.

COVID Pressure

- Pressure from COVID increased further during January, significantly exceeding both previous peaks.
- At the end of January there were 1,017 inpatients with a positive test compared to 708 at the peak of the first wave on 10 April. Of these 701 were considered 'active positives'.
- There were 175 patients on ITU of which 152 were positive.
- 12.3% of presentations at ED over the month were with 'COVID-like' symptoms, an increase from 7.1% in the last week of December.
- Each day an average of 107 positive patients in ED with a peak of 141 on 19 January.
- As of 31 January 69,322 individuals had been vaccinated at the hospital hubs and vaccination centres with 3,220 vaccinated on 18 January alone.

4 Hour Wait Performance

National Performance:
78.5%

Good Hope Type 1

61.7%



-4.7pp vs. Dec 20
-1.6pp vs. Jan 20

Heartlands Type 1

58.3%



-7.0pp vs. Dec 20
-3.8pp vs. Jan 20

QEHB Type 1

55.1%



-9.2pp vs. Dec 20
-3.9pp vs. Jan 20

Solihull Type 3

-

UHB Trust

59.3%



-6.9pp vs. Dec 20
-6.7pp vs. Jan 20

System

71.6%



-4.1pp vs. Dec 20
-6.2pp vs. Jan 20

Average Time in A&E

Good Hope Type 1

267 mins



+22 mins vs. Dec 20
-28 mins vs. Jan 20

Heartlands Type 1

279 mins



+29 mins vs. Dec 20
-7 mins vs. Jan 20

QEHB Type 1

288 mins



+37 mins vs. Dec 20
-3 mins vs. Jan 20

Solihull Type 3

-

UHB

280 mins



+30 mins vs. Dec 20
+6 mins vs. Jan 20

UHB (average daily)

735.7 pd



-63.7 pd vs. Dec 20
-376.9 pd vs. Jan 20

Attendances

- 4 hour performance was 6.9pp lower than last month and 6.9pp lower than Jan 2020.
- All sites saw performance fall compared to the December with the largest fall at QEHB.
- Overall, the average time spent in A&E increased by 30mins, compared to December.
- There were 8 12 hr breaches; 5 at Good Hope, 2 at Heartlands and 1 at QEHB. Five of the delays were due to a lack of non-COVID capacity, two were delays in transferring to psychiatric care and one was a delay for clinical reasons.

- Ask A&E usage was 2.8% lower than December with 395 patients redirected from ED.
- 12.3% of attendances in January had 'COVID-19 like presentation' double the proportion in December which was 6.1%.
- On average 107 attenders each day tested positive in the Trust's Emergency Depts.
- Ambulance handover delays remain high, reflecting patient acuity and capacity issues.

Referral to Treatment Time

December 2020

Incomplete Pathway Performance

National Performance:
67.8%

Oral Surgery

31.0%



-3.4pp vs. Nov 20
-52.8pp vs. Dec 19

ENT

46.4%



-4.0pp vs. Nov 20
-31.3pp vs. Dec 19

Ophthalmology

47.6%



-1.1pp vs. Nov 20
-35.5pp vs. Dec 19

Urology

50.5%



+0.5pp vs. Nov 20
-19.1pp vs. Dec 19

Plastic Surgery

52.6%



-2.6pp vs. Nov 20
-27.4pp vs. Dec 19

UHB

63.4%



-1.5pp vs. Nov 20
-17.5pp vs. Dec 19

Longer Waits

Waits over 52 weeks

No. Ch'nge

Urology	1458	+146
ENT	1415	+349
Ophthalmology	1201	+303
Other	1024	+247
General Surgery	781	+149
UHB	7,294	+1,488

Waits over 40 weeks

No. Ch'nge

ENT	4132	+781
Ophthalmology	3710	+838
Other	3184	+687
Urology	2684	+277
General Surgery	1447	+173
UHB	20,229	+3,840

Waits over 18 weeks

No. Ch'nge

Other	8,452	+1,267
ENT	7,101	+941
Ophthalmology	5,692	+562
Urology	4,607	+264
Trauma & Ortho	3,552	+899
UHB	45,506	+6,659

Waiting list size

Largest lists

No. UHB %

Other	30,556	24.6%
ENT	13,241	10.6%
Ophthalmology	10,859	8.7%
Urology	9,307	7.5%
Cardiology	7,778	6.2%
UHB	124,456	

Monthly change

No. %

Other	+4,434	+17.0%
Gynaecology	+1,392	+30.9%
Gastro	+1,032	+17.2%
Cardiology	+972	+14.3%
Ophthalmology	+864	+8.6%
UHB	+13,705	+12.4%

UHB total

124,456

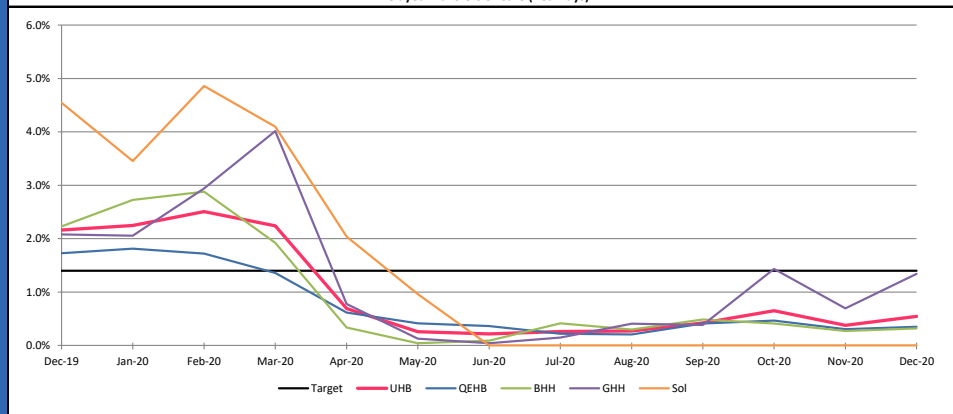


+13,705 vs. Nov 20
+31,753 vs. Dec 19

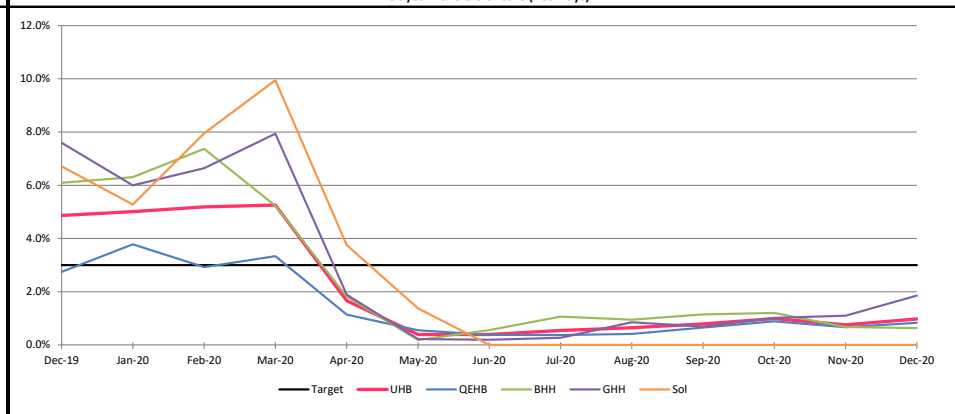
- With a significant proportion of elective activity cancelled in December the overall incomplete RTT performance deteriorated by 1.5pp to 63.4%.
- With no resumption January will show a further deterioration in performance.
- There were 7,294 52 week breaches in December an increase of 1,488 compared to the previous month. The largest increase was seen in ENT which had an additional 349 52 week breaches. The number of patients waiting over 40 weeks also increased by 3,840.
- The RTT waiting list was 13,705 higher than the previous month and is a third larger than in December 2019. Work continues to resolve anomalies caused by Oceano implementation.

Delayed Transfers of Care (NHS & Joint)													Latest Month:		0.5%																
Responsible Director: Chief Operating Officer													Target:		1.4%																
	Dec 19	Jan 20	Feb 20	Mar 20	Apr 20	May 20	Jun 20	Jul 20	Aug 20	Sep 20	Oct 20	Nov 20	Dec 20	YTD	Delayed Transfers of Care (All)													Latest Month:		1.0%	
Responsible Director: Chief Operating Officer													Target:		3.0%																
QEHB	1.7%	1.8%	1.7%	1.4%	0.6%	0.4%	0.4%	0.2%	0.2%	0.4%	0.5%	0.3%	0.3%	0.4%	QEHB	2.7%	3.8%	2.9%	3.3%	1.1%	0.6%	0.4%	0.4%	0.4%	0.7%	0.9%	0.7%	0.8%	0.6%		
BHH	2.2%	2.7%	2.9%	1.9%	0.3%	0.0%	0.1%	0.4%	0.3%	0.5%	0.4%	0.3%	0.3%	0.3%	BHH	6.1%	6.3%	7.4%	5.2%	1.8%	0.2%	0.6%	1.1%	1.0%	1.1%	1.2%	0.7%	0.6%	0.9%		
GHH	2.1%	2.1%	2.9%	4.0%	0.8%	0.1%	0.0%	0.2%	0.4%	0.4%	1.4%	0.7%	1.3%	0.6%	GHH	7.6%	6.0%	6.6%	7.9%	1.9%	0.2%	0.2%	0.3%	0.9%	0.7%	1.0%	1.1%	1.9%	0.9%		
Solihull	4.5%	3.5%	4.9%	4.1%	2.0%	1.0%	0.0%	0.0%	0.0%	0.0%	0.0%	0.0%	0.0%	1.1%	Solihull	6.7%	5.3%	8.0%	9.9%	3.8%	1.4%	0.0%	0.0%	0.0%	0.0%	0.0%	0.0%	0.0%	0.0%	2.0%	
UHB	2.2%	2.2%	2.5%	2.2%	0.7%	0.3%	0.2%	0.3%	0.3%	0.4%	0.7%	0.4%	0.5%	0.4%	UHB	4.9%	5.0%	5.2%	5.3%	1.7%	0.4%	0.4%	0.5%	0.6%	0.8%	1.0%	0.8%	1.0%	0.8%		

Delayed Transfers of Care (Bed Days)



Delayed Transfers of Care (Bed Days)

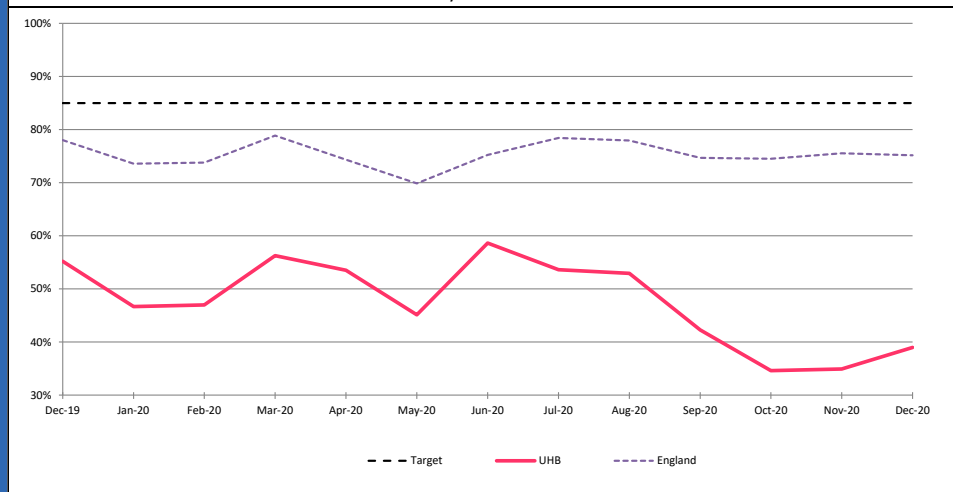


- The overall percentage of NHS and joint delays increased slightly in December to 0.6%.
- The total percentage delay was also increased slightly to 1.0%.
- The Discharge Hub Management System (DHMS) successfully went live at Good Hope and Solihull hospitals on 11 January and at Heartlands Hospital a week later. This enables the team to have a centralised clearer picture of the patients that can be prioritised for discharge and should lead to a shorter length of stay.
- December saw reductions in pathway 2 capacity both in Birmingham and Solihull at different times. Additional pathway 2 beds have opened. Norman Power Centre was used for non-Birmingham pts where beds might not be sourced for more than 48 hrs.

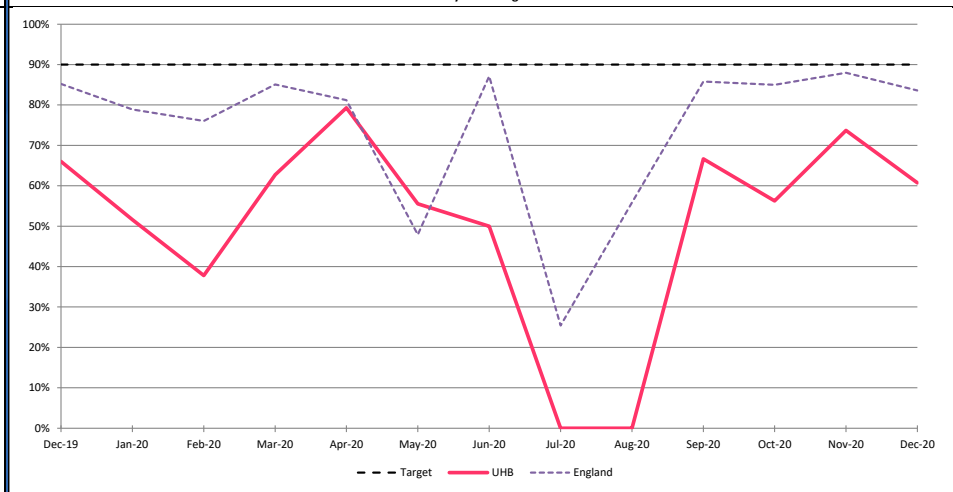
Cancer - 62 Day GP Referrals													Latest Month:		39.0%	
Responsible Director: Chief Operating Officer					NHS Oversight Framework				Latest mth trajectory:		Target:		85%			
	Dec 19	Jan 20	Feb 20	Mar 20	Apr 20	May 20	Jun 20	Jul 20	Aug 20	Sep 20	Oct 20	Nov 20	Dec 20	YTD		
UHB	55.2%	46.7%	47.0%	56.3%	53.5%	45.1%	58.6%	53.6%	52.9%	42.3%	34.6%	34.9%	39.0%	45.1%		

Cancer - 62 Day Screening													Latest Month:		60.7%	
Responsible Director: Chief Operating Officer					NHS Oversight Framework				Latest mth trajectory:		Target:		90%			
	Dec 19	Jan 20	Feb 20	Mar 20	Apr 20	May 20	Jun 20	Jul 20	Aug 20	Sep 20	Oct 20	Nov 20	Dec 20	YTD		
UHB	66.0%	51.6%	37.8%	62.7%	79.3%	55.6%	50.0%	0.0%		66.7%	56.3%	73.7%	60.7%	66.8%		

Cancer - 62 Day GP Referral Performance



Cancer - 62 Day Screening Performance

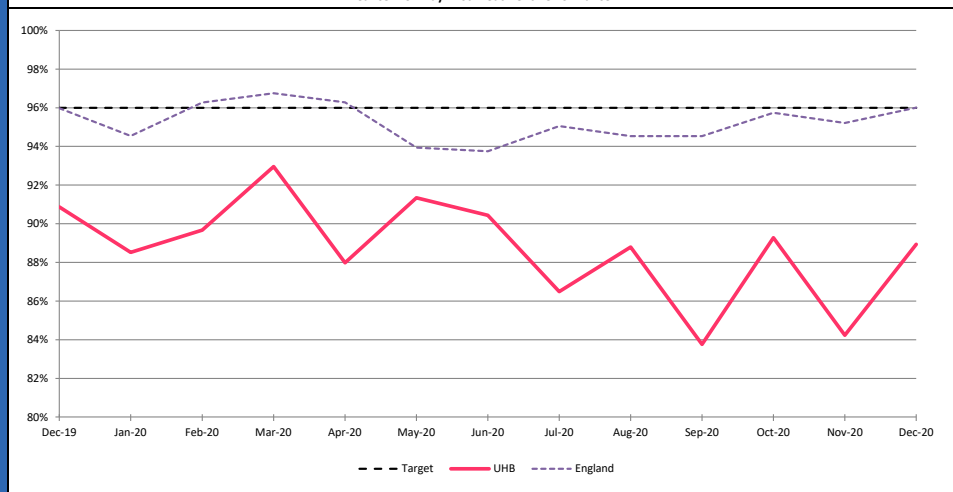


- 62 day performance for GP referrals increased 4.1pp to 39.0% whilst screening performance fell 13.0pp to 60.7%.
- As pressure from COVID increased in December some cancer surgery necessarily had to be cancelled affecting performance against the standards.
- Elective capacity continues to be stringently prioritised for patients with the highest clinical need; primarily those with cancer and other serious clinical conditions that require urgent treatment.

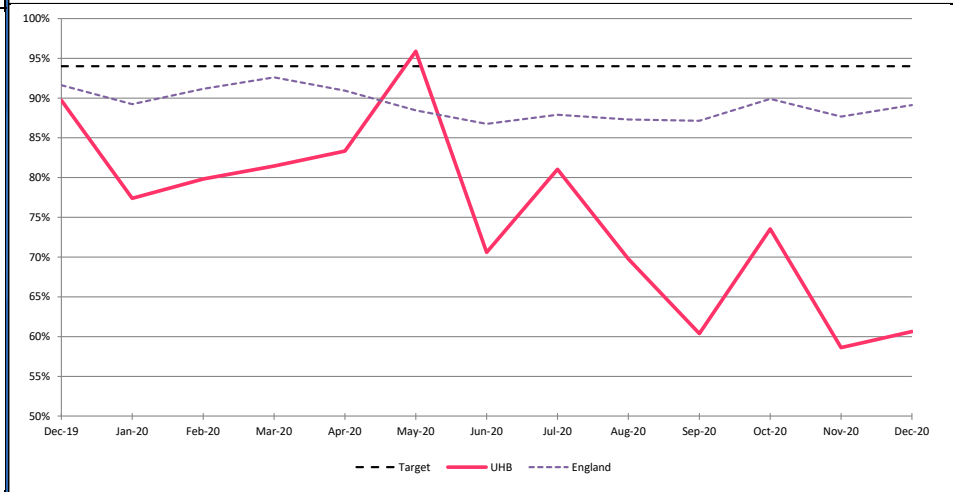
Cancer - 31 Day First Treatment													Latest Month:		88.9%	
Responsible Director: Chief Operating Officer					Cancer Access			Latest mth trajectory:			Target:		96%			
	Dec 19	Jan 20	Feb 20	Mar 20	Apr 20	May 20	Jun 20	Jul 20	Aug 20	Sep 20	Oct 20	Nov 20	Dec 20	YTD		
UHB	90.9%	88.5%	89.7%	93.0%	88.0%	91.3%	90.4%	86.5%	88.8%	83.8%	89.3%	84.2%	88.9%	87.8%		

Cancer - 31 Day Subsequent Treatment (Surgery)													Latest Month:		60.6%	
Responsible Director: Chief Operating Officer					Cancer Access			Latest mth trajectory:			Target:		94%			
	Dec 19	Jan 20	Feb 20	Mar 20	Apr 20	May 20	Jun 20	Jul 20	Aug 20	Sep 20	Oct 20	Nov 20	Dec 20	YTD		
UHB	89.7%	77.4%	79.8%	81.4%	83.3%	95.9%	70.6%	81.0%	69.8%	60.4%	73.5%	58.6%	60.6%	71.2%		

Cancer - 31 Day First Treatment Performance

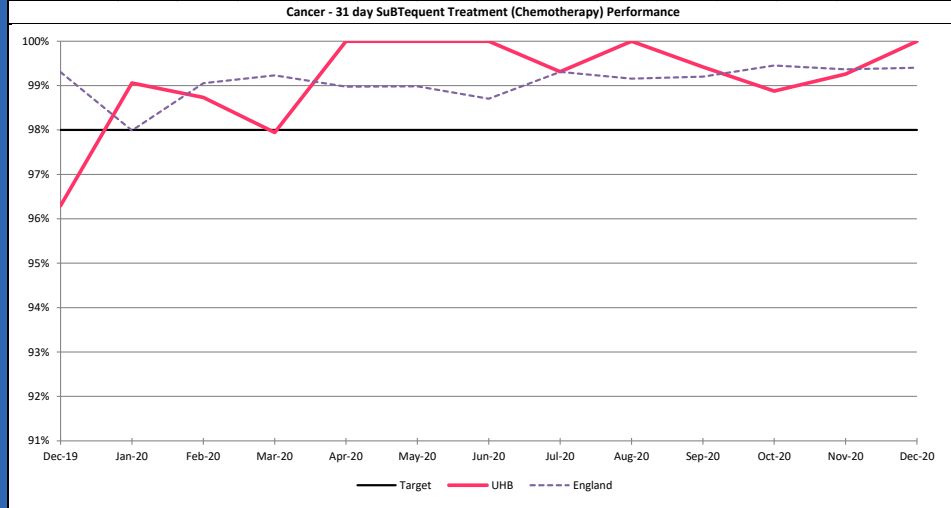


Cancer - 31 day Subsequent Treatment (Surgery) Performance

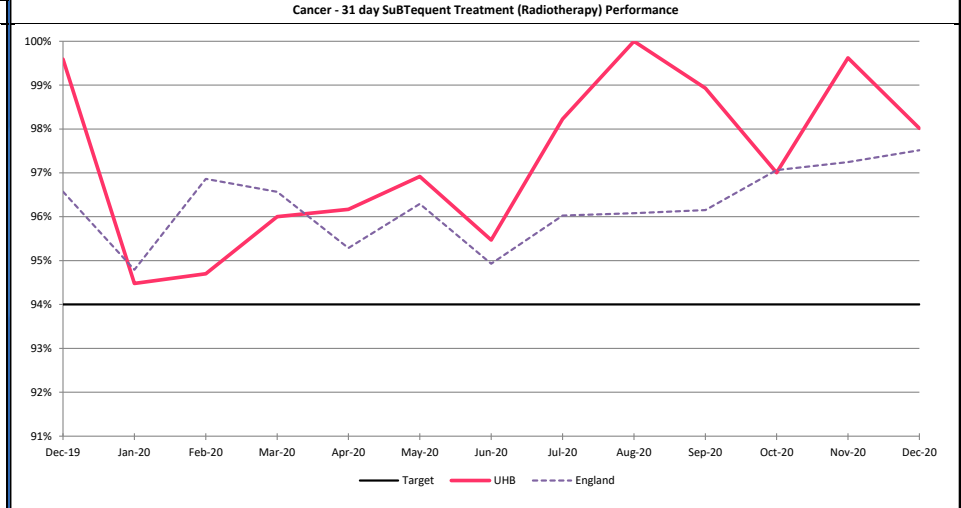


- 31 day first treatment performance increased 4.7pp to 88.9%.
- Subsequent surgery overall performance also increased, by 2.0pp to 60.6%.
- Although there were necessarily some cancellations over the month, activity levels increased with more than 450 first treatments and 127 subsequent surgeries.
- All cancer cases are being clinically prioritised in line with trust-wide approach to maximising theatre capacity in order to ensure most urgent cases are treated irrespective of waiting time.

Cancer - 31 Day Subsequent Treatment (Chemotherapy)												Latest Month:		100.0%	
Responsible Director: Chief Operating Officer				Cancer Access				Latest mth trajectory:				Target:		98%	
	Dec 19	Jan 20	Feb 20	Mar 20	Apr 20	May 20	Jun 20	Jul 20	Aug 20	Sep 20	Oct 20	Nov 20	Dec 20	YTD	
UHB	96.3%	99.1%	98.7%	97.9%	100.0%	100.0%	100.0%	99.3%	100.0%	99.4%	98.9%	99.3%	100.0%	99.5%	



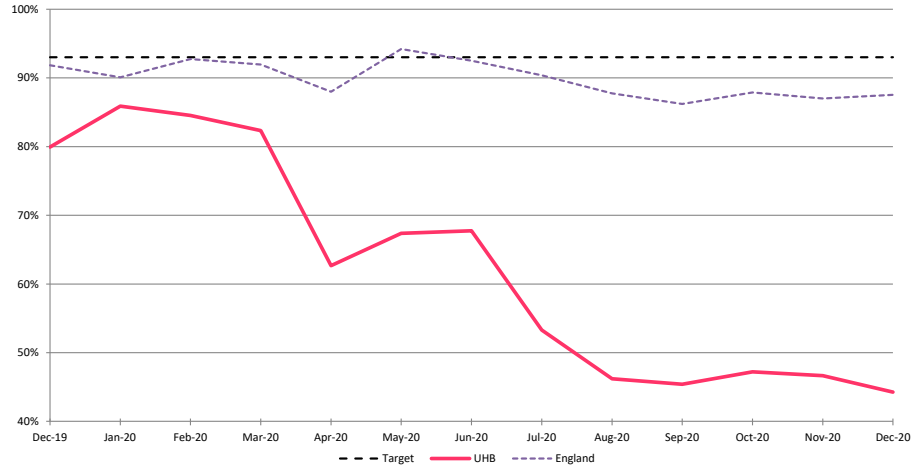
Cancer - 31 Day Subsequent Treatment (Radiotherapy)												Latest Month:		98.0%	
Responsible Director: Chief Operating Officer				Cancer Access				Latest mth trajectory:				Target:		94%	
	Dec 19	Jan 20	Feb 20	Mar 20	Apr 20	May 20	Jun 20	Jul 20	Aug 20	Sep 20	Oct 20	Nov 20	Dec 20	YTD	
UHB	99.6%	94.5%	94.7%	96.0%	96.2%	96.9%	95.5%	98.2%	100.0%	98.9%	97.0%	99.6%	98.0%	97.7%	



- Both 31 day subsequent chemotherapy and radiotherapy performance remained above target with all patients being treated with a subsequent chemotherapy treatment receiving this within 31 days.
- The Trust continued to maintain high levels of activity for both chemotherapy and radiotherapy over the month despite increasing pressure from COVID-19.

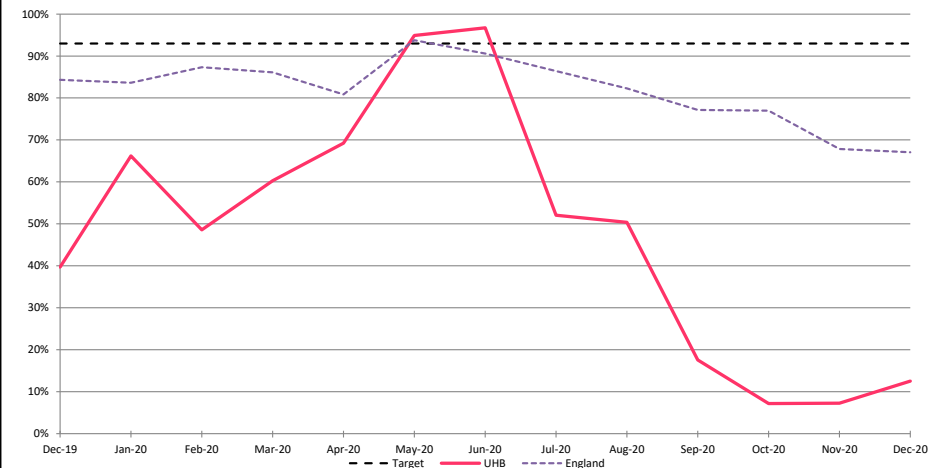
Cancer - 2 Week Wait (Suspected Cancer)											Latest Month: 44.3%					
Responsible Director: Chief Operating Officer											Cancer Access		Latest mth trajectory:		Target: 93%	
	Dec 19	Jan 20	Feb 20	Mar 20	Apr 20	May 20	Jun 20	Jul 20	Aug 20	Sep 20	Oct 20	Nov 20	Dec 20	YTD		
UHB	80.0%	85.9%	84.5%	82.3%	62.7%	67.4%	67.7%	53.3%	46.2%	45.4%	47.2%	46.6%	44.3%	51.3%		

Cancer - 2 Week Wait (Suspected Cancer) Performance



Cancer - 2 Week Wait (Breast Symptoms)											Latest Month: 12.5%					
Responsible Director: Chief Operating Officer											Cancer Access		Latest mth trajectory:		Target: 93%	
	Dec 19	Jan 20	Feb 20	Mar 20	Apr 20	May 20	Jun 20	Jul 20	Aug 20	Sep 20	Oct 20	Nov 20	Dec 20	YTD		
UHB	39.7%	66.2%	48.6%	60.3%	69.2%	94.9%	96.7%	52.0%	50.4%	17.5%	7.1%	7.3%	12.5%	42.2%		

Cancer - 2 Week Wait (Breast Symptoms) Performance



- Performance for suspected cancer patients fell 2.3pp to 44.3%.
- For patients with breast symptoms performance increased by 5.2pp.
- The majority of breaches for suspected cancer were in Breast, Skin, Colorectal, Upper GI and Gynaecology
- The target was achieved in Haematology and Sarcoma but these have lower numbers of patients.
- Each MDT lead has been tasked with implementing a clinically validated model for referral triage and stratification with protocols and management.

VTE Screening

Latest Month:

97.1%

Responsible Director: Medical Director

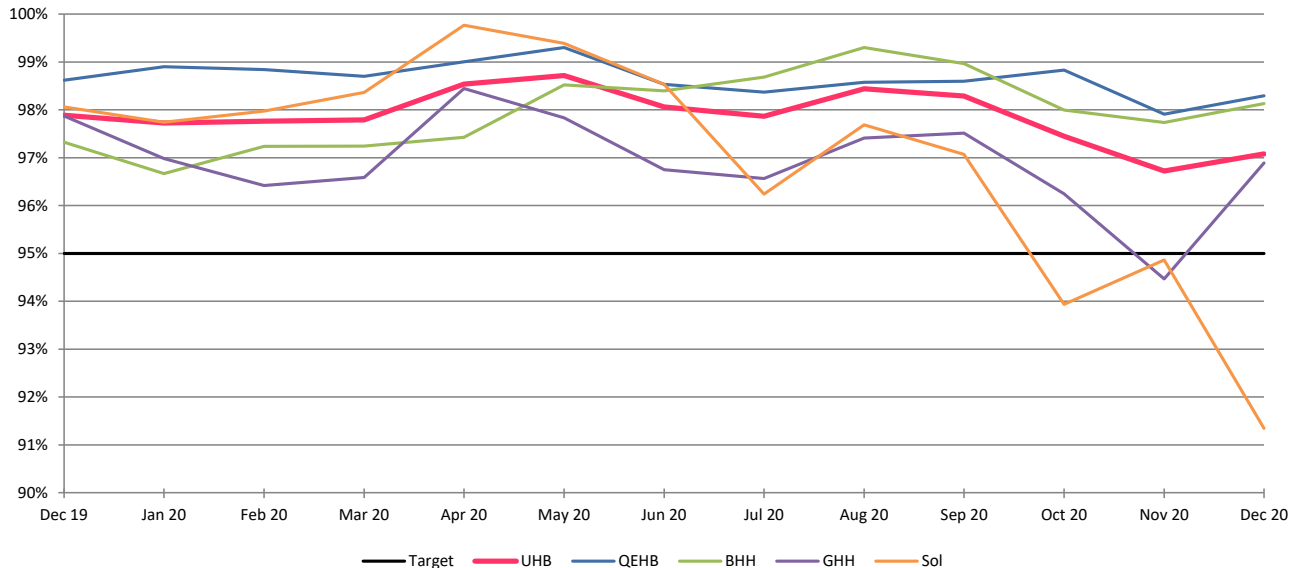
Clinical Quality

Target:

95%

	Dec 19	Jan 20	Feb 20	Mar 20	Apr 20	May 20	Jun 20	Jul 20	Aug 20	Sep 20	Oct 20	Nov 20	Dec 20	YTD
QEHB	98.6%	98.9%	98.8%	98.7%	99.0%	99.3%	98.5%	98.4%	98.6%	98.6%	98.8%	97.9%	98.3%	98.6%
BHH	97.3%	96.7%	97.2%	97.2%	97.4%	98.5%	98.4%	98.7%	99.3%	99.0%	98.0%	97.7%	98.1%	98.4%
GHH	97.9%	97.0%	96.4%	96.6%	98.4%	97.8%	96.7%	96.6%	97.4%	97.5%	96.2%	94.5%	96.9%	96.8%
Sol	98.1%	97.7%	98.0%	98.4%	99.8%	99.4%	98.5%	96.2%	97.7%	97.1%	93.9%	94.9%	91.3%	96.1%
UHB	97.9%	97.7%	97.8%	97.8%	98.5%	98.7%	98.1%	97.9%	98.4%	98.3%	97.4%	96.7%	97.1%	97.8%

VTE Screening



- Performance for the Trust improved 0.2pp to 97.1%.
- Solihull performance fell 3.6pp to 91.3%.
- The national return for this measure has been temporarily suspended therefore these figures are unvalidated.