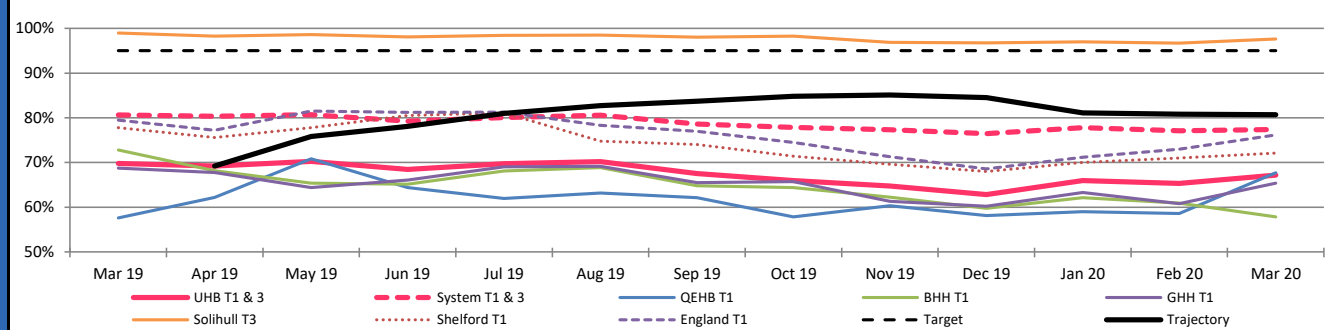


Performance Report

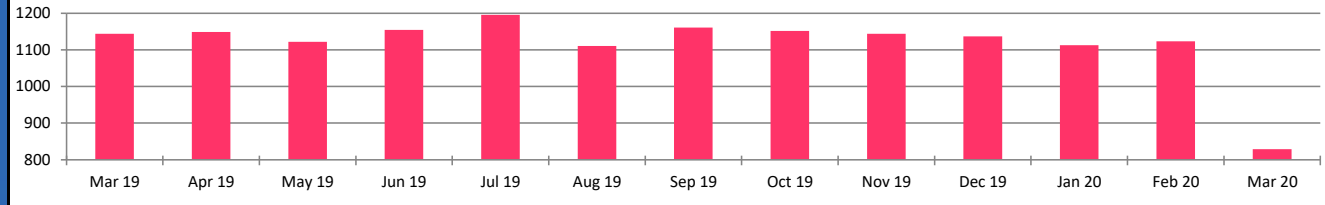
Mark Garrick
Director of Strategy and Quality
Development

A&E 4 Hour Waits				Latest Month:		UHB trust		67.2%		National Rank		118		
						UHB system		77.4%		(of 118 T1 Trusts)		110		
Responsible Director: Chief Operating Officer				NHS Oversight Framework		Latest mth trajectory:		80.7%		Target:		95%		
	Mar 19	Apr 19	May 19	Jun 19	Jul 19	Aug 19	Sep 19	Oct 19	Nov 19	Dec 19	Jan 20	Feb 20	Mar 20	YTD
QEHB T1	57.6%	62.2%	70.8%	64.4%	62.0%	63.2%	62.1%	57.8%	60.3%	58.1%	59.0%	58.6%	67.7%	62.1%
BHH T1	72.8%	68.2%	65.4%	65.1%	68.1%	68.9%	64.8%	64.4%	62.3%	59.8%	62.1%	60.9%	57.9%	64.1%
GHH T1	68.7%	67.8%	64.4%	66.1%	69.1%	69.2%	65.5%	65.8%	61.3%	60.2%	63.3%	60.8%	65.4%	64.9%
Solihull T3	99.0%	98.3%	98.6%	98.1%	98.4%	98.5%	98.1%	98.3%	96.9%	96.7%	97.0%	96.7%	97.6%	97.8%
UHB T1 & 3	69.8%	69.2%	70.2%	68.5%	69.7%	70.2%	67.5%	66.0%	64.7%	62.8%	66.0%	65.3%	67.2%	67.3%
System T1 & 3	80.6%	80.3%	80.7%	79.3%	80.0%	80.6%	78.6%	77.9%	77.3%	76.4%	77.8%	77.1%	77.4%	79.0%

A&E 4 Hour Wait Performance



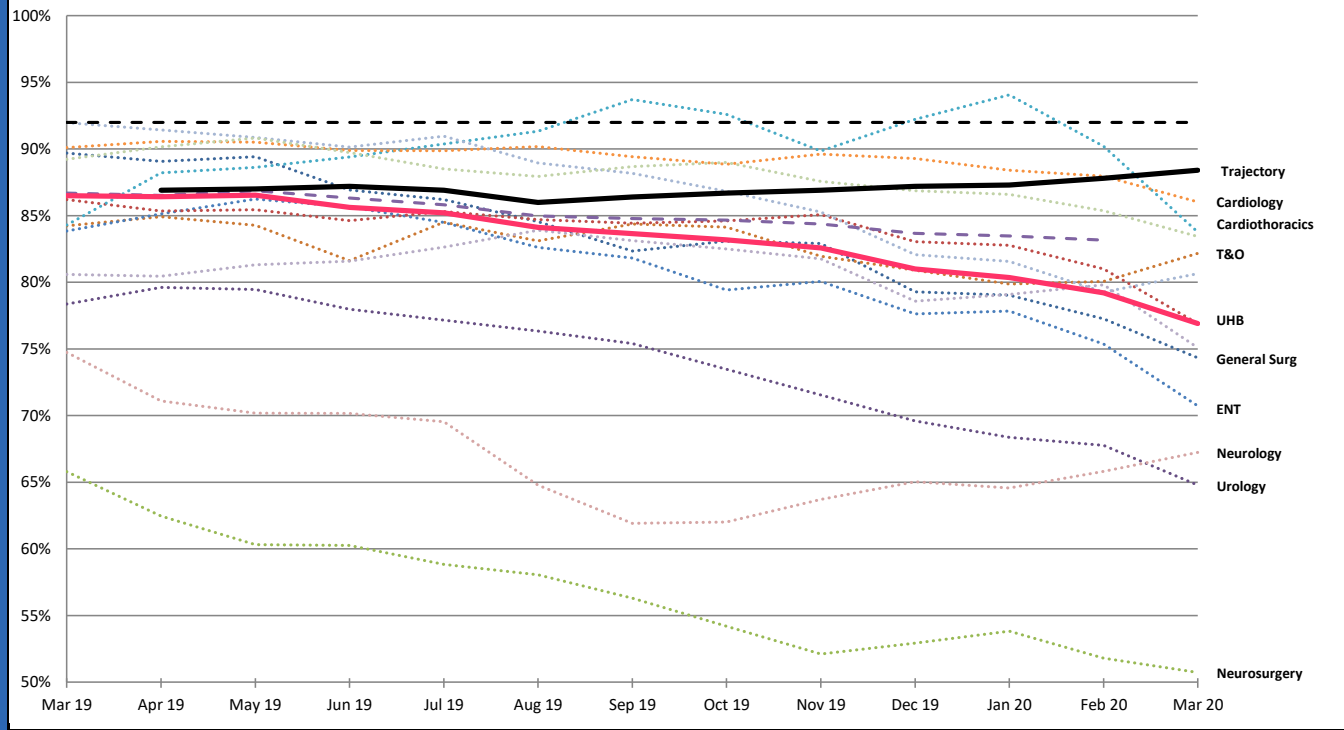
Daily Average Attendances



- Overall Trust performance improved to 67.2%.
- Attendances fell significantly as the public became aware of the risks relating to COVID-19.
- Overall, 10.1% of patients who attended in March had 'COVID-19 like' diagnoses.
- Ask A&E was used 1,294 times in March. Utilisation increased towards the end of the month and into April.
- 812 (62.8%) patients using Ask A&E were redirected to another service.
- Good Hope had one 12-hour trolley wait in March. The patient was awaiting a mental health bed.

RTT Incomplete Pathways											Latest Month:		76.9%	
Responsible Director: Chief Operating Officer					NHS Oversight Framework			Latest mth trajectory:		88.4%	Target:	92%		
	Mar 19	Apr 19	May 19	Jun 19	Jul 19	Aug 19	Sep 19	Oct 19	Nov 19	Dec 19	Jan 20	Feb 20	Mar 20	YTD
UHB	86.5%	86.4%	86.5%	85.6%	85.2%	84.1%	83.6%	83.2%	82.6%	81.0%	80.4%	79.2%	76.9%	82.8%

RTT Incomplete Pathway Performance



- Overall incomplete RTT performance deteriorated to 76.9%.
- Key issues during the Quarter were emergency demand on beds and reduced additional sessions due to pension tax.
- Cancellations of elective surgery and outpatient appointments in response to COVID-19 significantly affected performance.
- Neurology improved in March compared to February with additional capacity resulting in a reduction in the backlog.
- Neurosurgery performance deteriorated and continues to have a large volume of patients awaiting triage.

RTT Waiting List Size

Latest Month:

92,463

Responsible Director: Chief Operating Officer

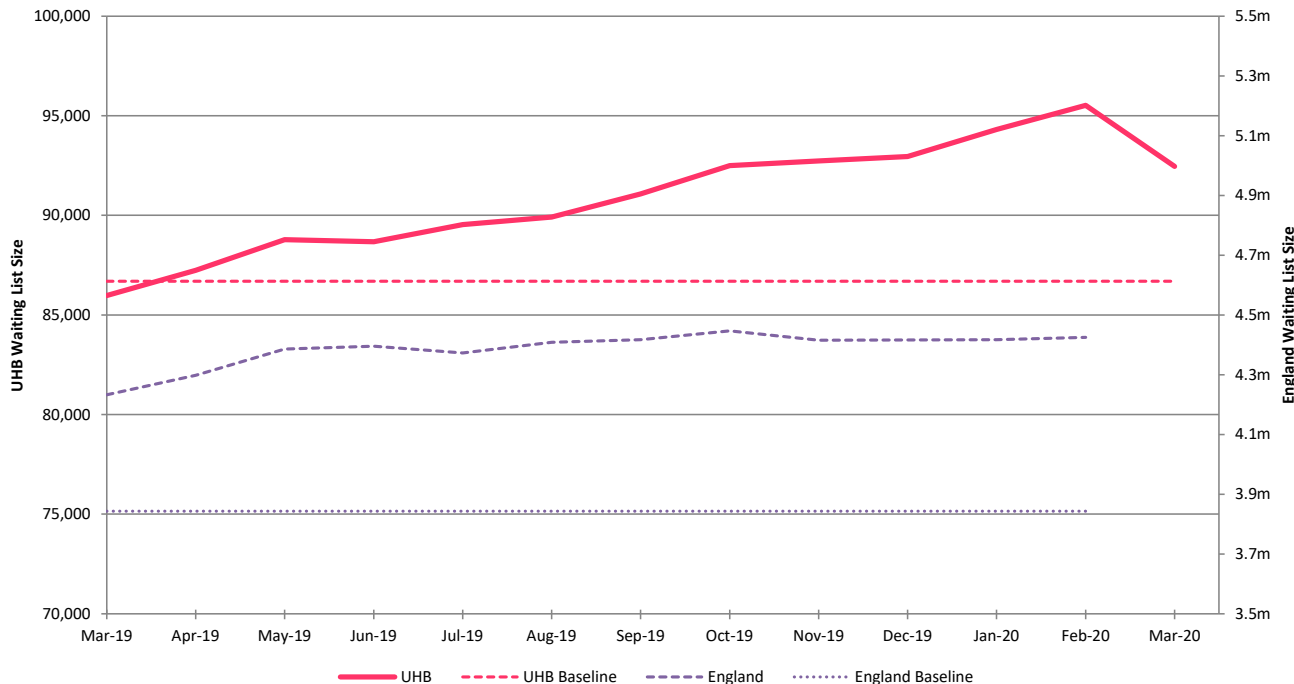
Planning Guidance

Target:

≤ 86,693

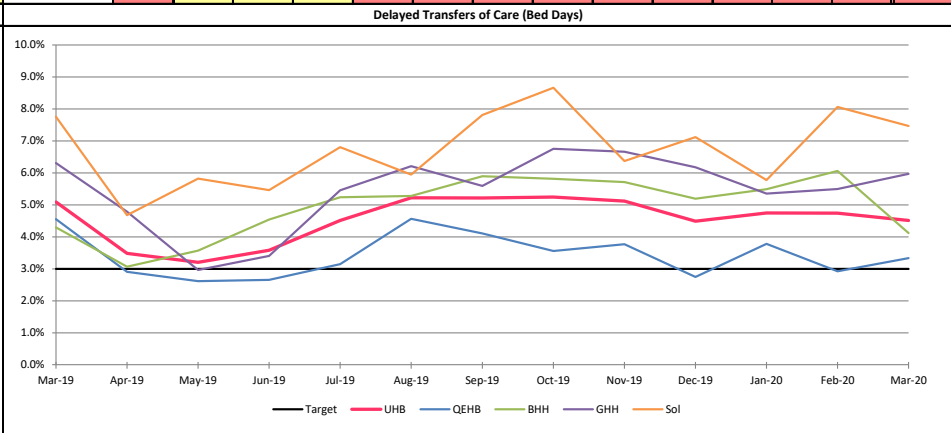
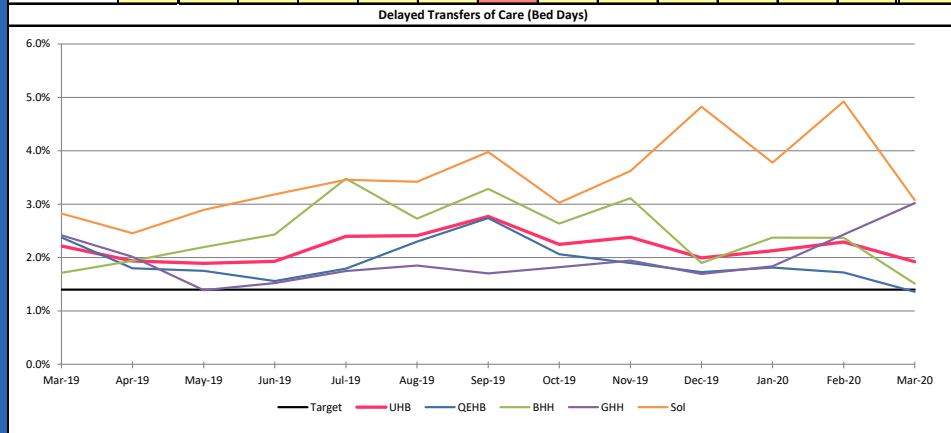
	Mar 19	Apr 19	May 19	Jun 19	Jul 19	Aug 19	Sep 19	Oct 19	Nov 19	Dec 19	Jan 20	Feb 20	Mar 20	Change
UHB	85,975	87,233	88,782	88,675	89,541	89,915	91,080	92,490	92,735	92,957	94,304	95,519	92,463	+5,770

RTT - Waiting List Size



- The RTT waiting list size fell in March by 3,056.
- It is now 5,770 (6.7%) above the baseline.
- The reduction in the waiting list size is linked to COVID-19, which has resulted in a significant drop in referrals and number of waiting list additions.
- The number of patients waiting longer than 40 weeks continued to grow.
- Nationally the waiting list in February grew to 4.43m which was 15.1% above the baseline.

Delayed Transfers of Care (NHS & Joint)												Latest Month:		1.9%	Delayed Transfers of Care (All)												Latest Month:		4.5%
Responsible Director: Chief Operating Officer												Target:		1.4%	Responsible Director: Chief Operating Officer												Target:		3.0%
	Mar 19	Apr 19	May 19	Jun 19	Jul 19	Aug 19	Sep 19	Oct 19	Nov 19	Dec 19	Jan 20	Feb 20	Mar 20	YTD		Mar 19	Apr 19	May 19	Jun 19	Jul 19	Aug 19	Sep 19	Oct 19	Nov 19	Dec 19	Jan 20	Feb 20	Mar 20	YTD
QEHB	2.4%	1.8%	1.8%	1.6%	1.8%	2.3%	2.7%	2.1%	1.9%	1.7%	1.8%	1.7%	1.4%	1.9%	QEHB	4.6%	2.9%	2.6%	2.7%	3.1%	4.6%	4.1%	3.6%	3.8%	2.7%	3.8%	2.9%	3.3%	3.3%
BHH	1.7%	1.9%	2.2%	2.4%	3.5%	2.7%	3.3%	2.6%	3.1%	1.9%	2.4%	2.4%	1.5%	2.5%	BHH	4.3%	3.1%	3.6%	4.5%	5.2%	5.3%	5.9%	5.8%	5.7%	5.2%	5.5%	6.1%	4.1%	5.0%
GHH	2.4%	2.0%	1.4%	1.5%	1.7%	1.9%	1.7%	1.8%	1.9%	1.7%	1.8%	2.4%	3.0%	1.9%	GHH	6.3%	4.8%	3.0%	3.4%	5.5%	6.2%	5.6%	6.8%	6.7%	6.2%	5.4%	5.5%	6.0%	5.4%
Solihull	2.8%	2.5%	2.9%	3.2%	3.5%	3.4%	4.0%	3.0%	3.6%	4.8%	3.8%	4.9%	3.1%	3.5%	Solihull	7.7%	4.7%	5.8%	5.5%	6.8%	5.9%	7.8%	8.7%	6.4%	7.1%	5.8%	8.1%	7.5%	6.7%
UHB	2.2%	1.9%	1.9%	1.9%	2.4%	2.4%	2.8%	2.2%	2.4%	2.0%	2.1%	2.3%	1.9%	2.2%	UHB	5.1%	3.5%	3.2%	3.6%	4.5%	5.2%	5.2%	5.2%	5.1%	4.5%	4.7%	4.7%	4.5%	4.5%



- The overall percentage of NHS and joint delays in March improved to 1.9%.
- The total percentage delay improved by 0.2pp to 4.5%.
- Heartlands and Solihull had an improvement in overall delayed transfer of care, whilst QEHB and Good Hope performance deteriorated.
- Heartlands and Solihull improved by 2.0pp to 4.1% and 0.6pp to 7.5%, respectively.
- QEHB and Good Hope deteriorated by 0.4pp to 3.3% and 0.5pp to 6.0%, respectively.

VTE Screening

Latest Month:

97.8%

Responsible Director: Medical Director

Clinical Quality

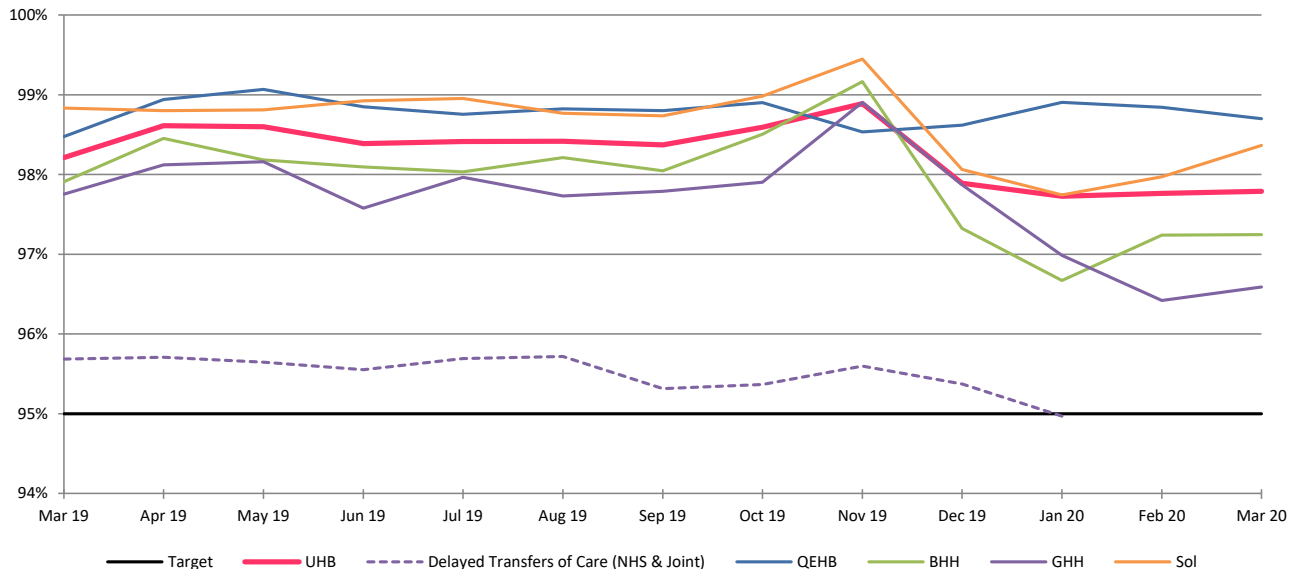
Target:

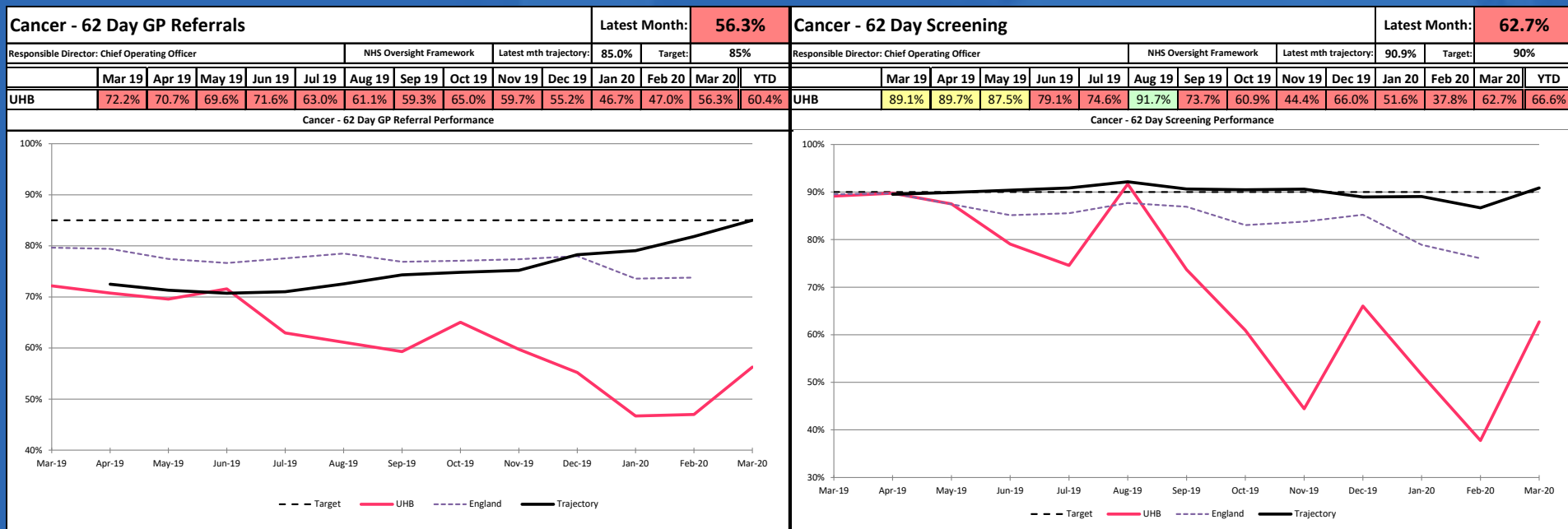
95%

	Mar 19	Apr 19	May 19	Jun 19	Jul 19	Aug 19	Sep 19	Oct 19	Nov 19	Dec 19	Jan 20	Feb 20	Mar 20	YTD
QEHB	98.5%	98.9%	99.1%	98.8%	98.8%	98.8%	98.8%	98.9%	98.5%	98.6%	98.9%	98.8%	98.7%	98.8%
BHH	97.9%	98.5%	98.2%	98.1%	98.0%	98.2%	98.0%	98.5%	99.2%	97.3%	96.7%	97.2%	97.2%	97.9%
GHH	97.8%	98.1%	98.2%	97.6%	98.0%	97.7%	97.8%	97.9%	98.9%	97.9%	97.0%	96.4%	96.6%	97.7%
Sol	98.8%	98.8%	98.8%	98.9%	99.0%	98.8%	98.7%	99.0%	99.4%	98.1%	97.7%	98.0%	98.4%	98.6%
UHB	98.2%	98.6%	98.6%	98.4%	98.4%	98.4%	98.4%	98.6%	98.9%	97.9%	97.7%	97.8%	97.8%	98.3%

- Performance for the Trust remained above target at 97.8%.

VTE Screening

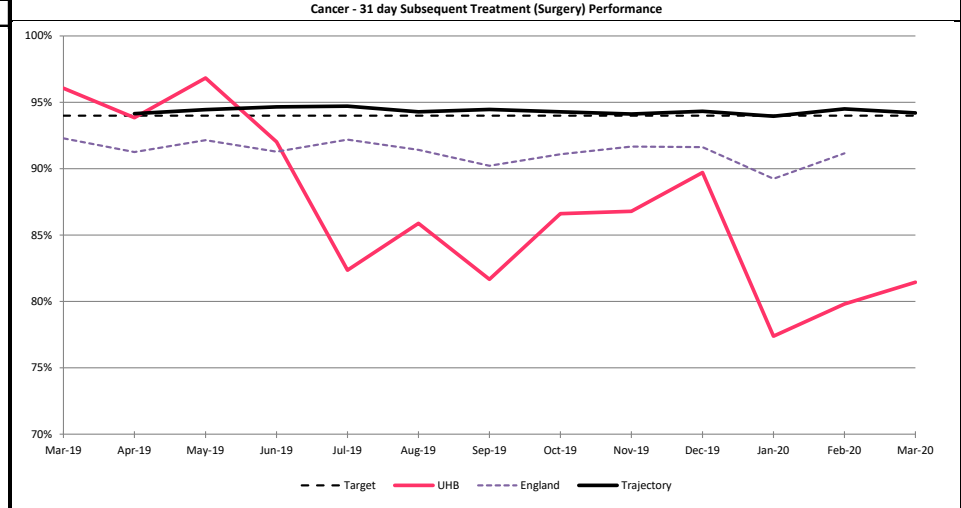
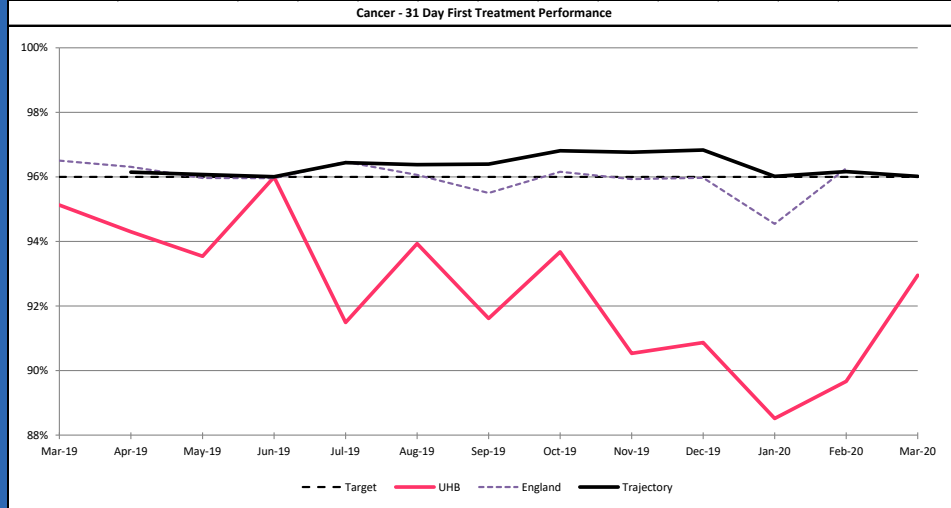




- The Trust's overall 62 day performance for GP referrals improved to 56.3%.
- Screening performance improved by 24.9pp to 62.7%, against the monthly trajectory of 90.9%.
- Ongoing delays in diagnostic pathways due to capacity constraints are impacting on the treatment times for all patient groups, whether they have been referred via a GP or the screening service.
- Despite continued demand pressures the Trust still delivered 233.5 accountable 62 day first treatments in February, an increase of nearly 20% compared to February 2019 whilst March activity increased to 299.5.

Cancer - 31 Day First Treatment													Latest Month:		93.0%	
Responsible Director: Chief Operating Officer				Cancer Access			Latest mth trajectory:			96.0%		Target:		96%		
	Mar 19	Apr 19	May 19	Jun 19	Jul 19	Aug 19	Sep 19	Oct 19	Nov 19	Dec 19	Jan 20	Feb 20	Mar 20	YTD		
UHB	95.1%	94.3%	93.5%	96.0%	91.5%	93.9%	91.6%	93.7%	90.5%	90.9%	88.5%	89.7%	93.0%	92.3%		

Cancer - 31 Day Subsequent Treatment (Surgery)													Latest Month:		81.4%	
Responsible Director: Chief Operating Officer				Cancer Access			Latest mth trajectory:			94.2%		Target:		94%		
	Mar 19	Apr 19	May 19	Jun 19	Jul 19	Aug 19	Sep 19	Oct 19	Nov 19	Dec 19	Jan 20	Feb 20	Mar 20	YTD		
UHB	96.1%	93.8%	96.8%	92.0%	82.4%	85.9%	81.7%	86.6%	86.8%	89.7%	77.4%	79.8%	81.4%	86.6%		

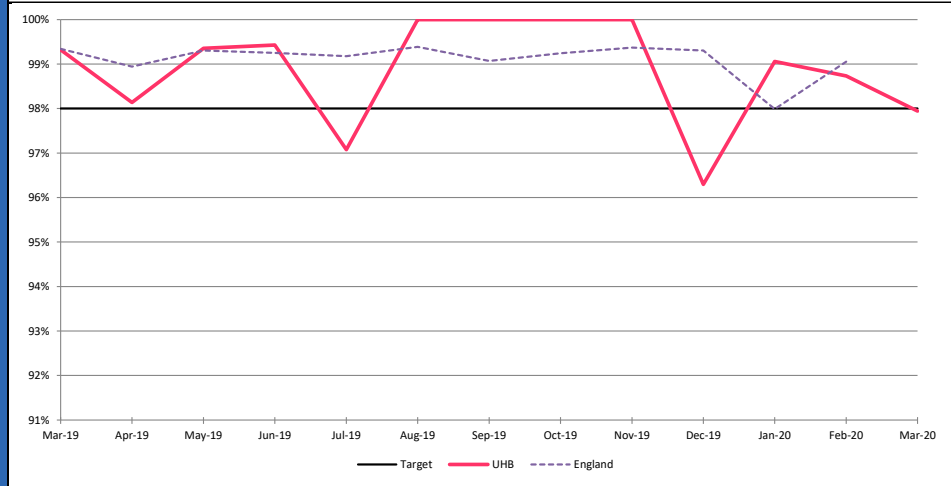


- 31 day first treatment performance improved by 3.3pp to 93.0%, against a monthly trajectory of 96.0%.
- The majority of breaches were in Urology, where there remain theatre capacity constraints.
- Breast delays in the diagnostic phase of the pathway continue to impact on treatment times.
- Subsequent surgery performance for the Trust improved to 81.4%. Ongoing elevated urgent care demand continued to place excessive pressures on ward and ITU beds available for elective cases.

Cancer - 31 Day Subsequent Treatment (Chemotherapy)

Responsible Director: Chief Operating Officer										Cancer Access				Latest mth trajectory:		97.9%		Target:		98%	
	Mar 19	Apr 19	May 19	Jun 19	Jul 19	Aug 19	Sep 19	Oct 19	Nov 19	Dec 19	Jan 20	Feb 20	Mar 20	YTD							
UHB	99.3%	98.1%	99.4%	99.4%	97.1%	100.0%	100.0%	100.0%	100.0%	96.3%	99.1%	98.7%	97.9%	98.9%							

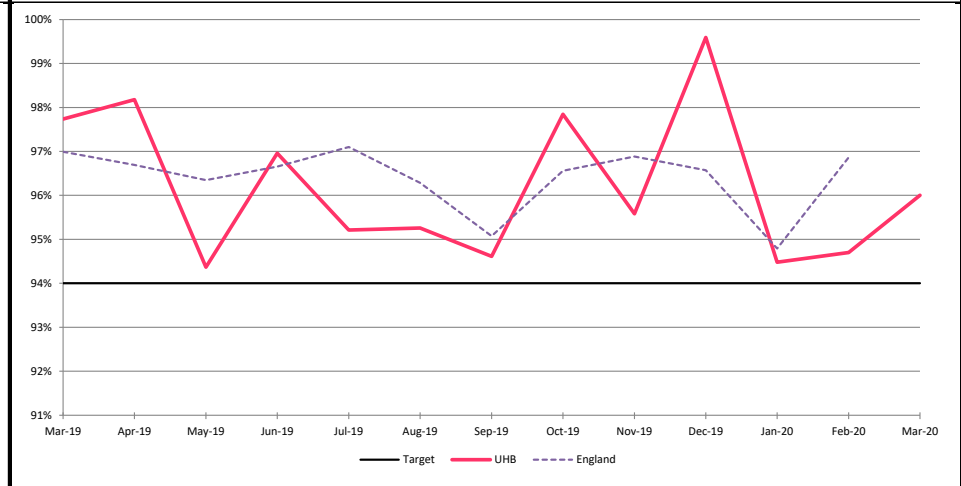
Cancer - 31 day Subsequent Treatment (Chemotherapy) Performance



Cancer - 31 Day Subsequent Treatment (Radiotherapy)

Responsible Director: Chief Operating Officer										Cancer Access				Latest Month:		96.0%	
	Mar 19	Apr 19	May 19	Jun 19	Jul 19	Aug 19	Sep 19	Oct 19	Nov 19	Dec 19	Jan 20	Feb 20	Mar 20	YTD			
UHB	97.7%	98.2%	94.4%	97.0%	95.2%	95.3%	94.6%	97.8%	95.6%	99.6%	94.5%	94.7%	96.0%	96.0%			

Cancer - 31 day Subsequent Treatment (Radiotherapy) Performance



- 31 day subsequent chemotherapy performance fell to 97.9% due to 3 breaches.
- 31 day subsequent radiotherapy performance improved to 96.0%.