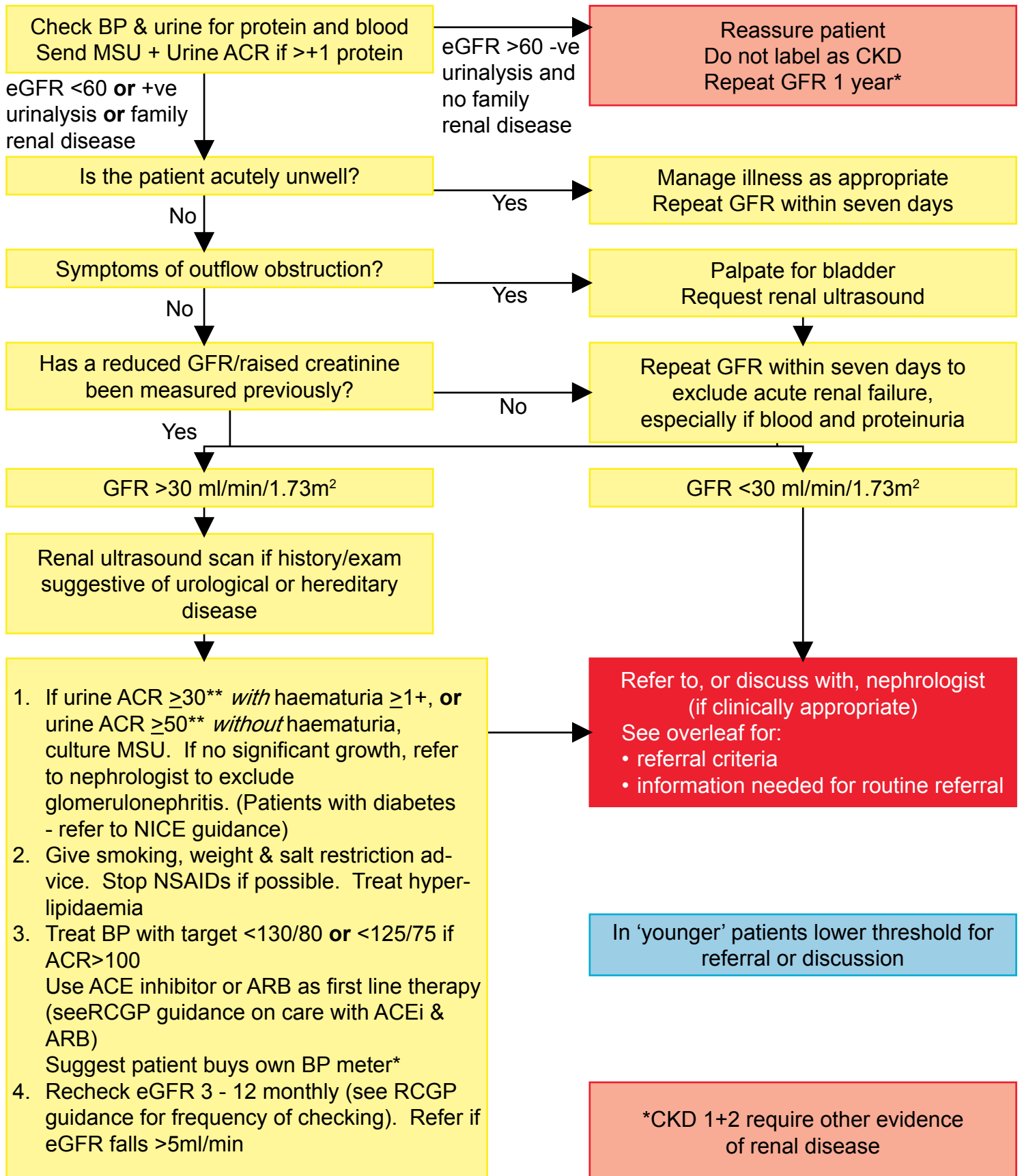


Management of eGFR in adults (NB To be used in conjunction with RCGP 'Introducing eGFR Guidance')



*Recommend validated BP monitor with upper arm cuff, **mg/mmol

Based on algorithm of Dr Rayner and Dr Adu, Depts of Renal Medicine, BHH and UHBFT. V22-10-06 Review date 2007