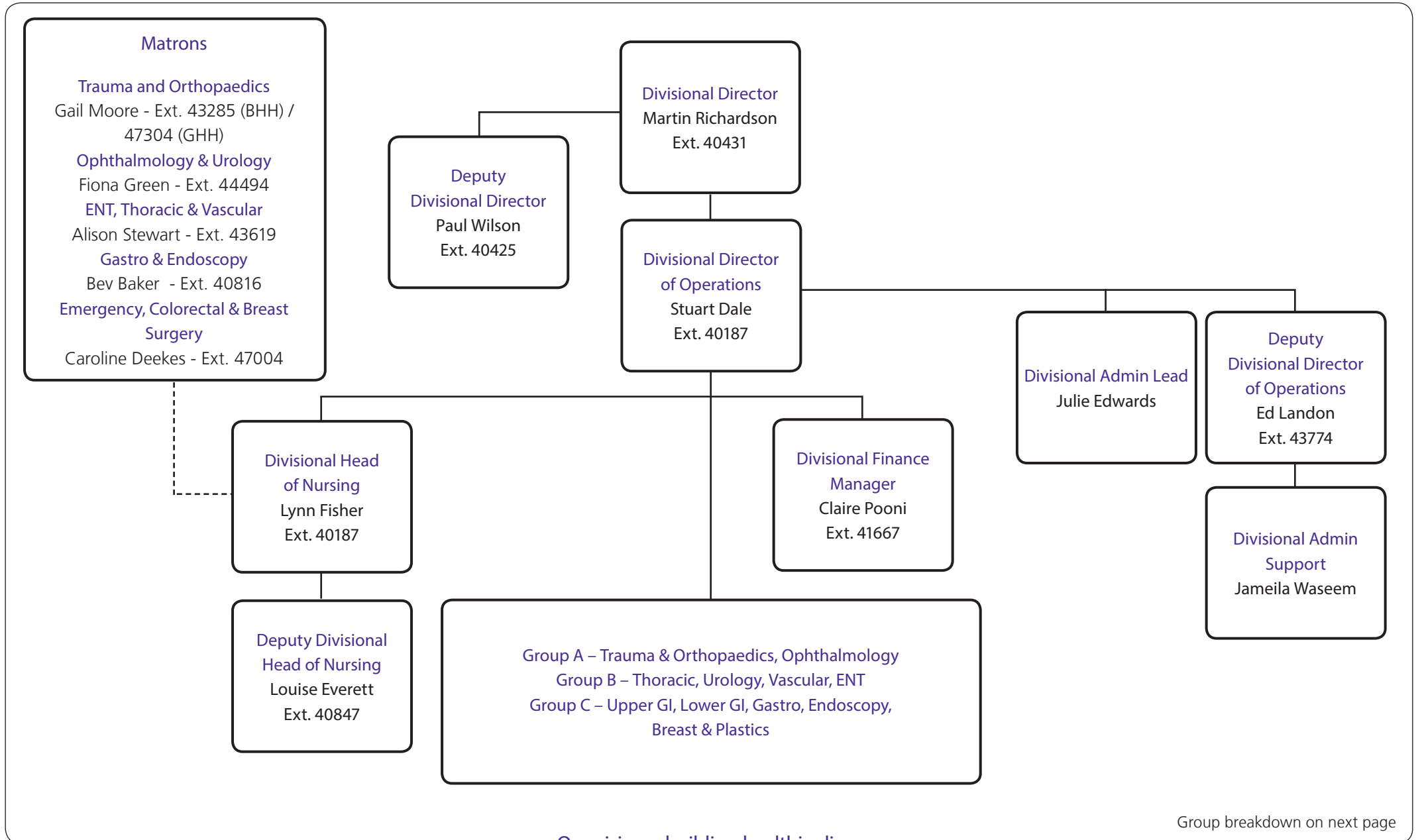




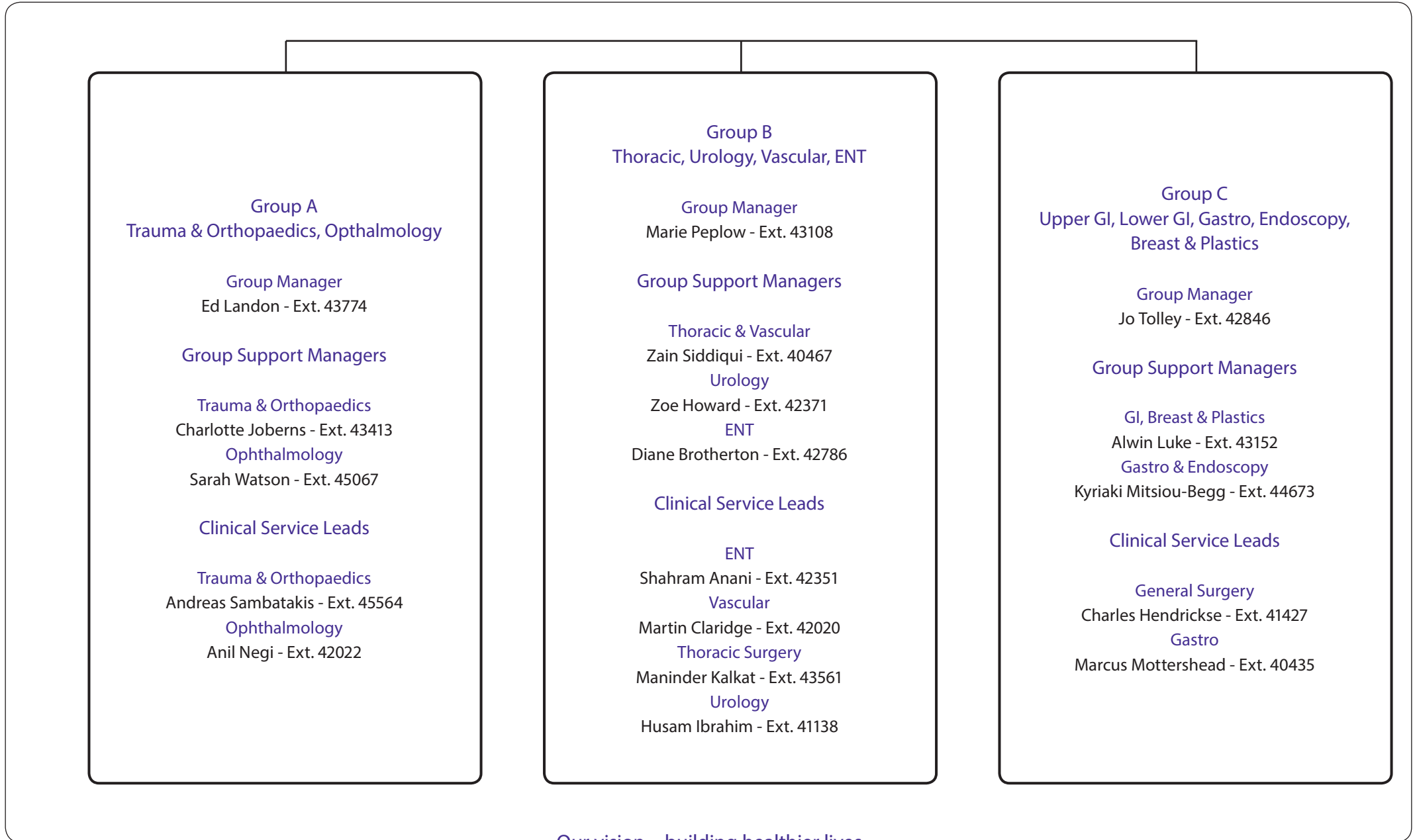
Trust Structure: HGS Division 5



Group breakdown on next page



Trust Structure: HGS Division 5 – Groups



Group A
Trauma & Orthopaedics, Ophthalmology

Group Manager
Ed Landon - Ext. 43774

Group Support Managers

Trauma & Orthopaedics
Charlotte Joberns - Ext. 43413
Ophthalmology
Sarah Watson - Ext. 45067

Clinical Service Leads

Trauma & Orthopaedics
Andreas Sambatakis - Ext. 45564
Ophthalmology
Anil Negi - Ext. 42022

Group B
Thoracic, Urology, Vascular, ENT

Group Manager
Marie Peplow - Ext. 43108

Group Support Managers

Thoracic & Vascular
Zain Siddiqui - Ext. 40467
Urology
Zoe Howard - Ext. 42371
ENT
Diane Brotherton - Ext. 42786

Clinical Service Leads

ENT
Shahram Anani - Ext. 42351
Vascular
Martin Claridge - Ext. 42020
Thoracic Surgery
Maninder Kalkat - Ext. 43561
Urology
Husam Ibrahim - Ext. 41138

Group C
Upper GI, Lower GI, Gastro, Endoscopy,
Breast & Plastics

Group Manager
Jo Tolley - Ext. 42846

Group Support Managers

GI, Breast & Plastics
Alwin Luke - Ext. 43152
Gastro & Endoscopy
Kyriaki Mitsiou-Begg - Ext. 44673

Clinical Service Leads

General Surgery
Charles Hendrickse - Ext. 41427
Gastro
Marcus Mottershead - Ext. 40435