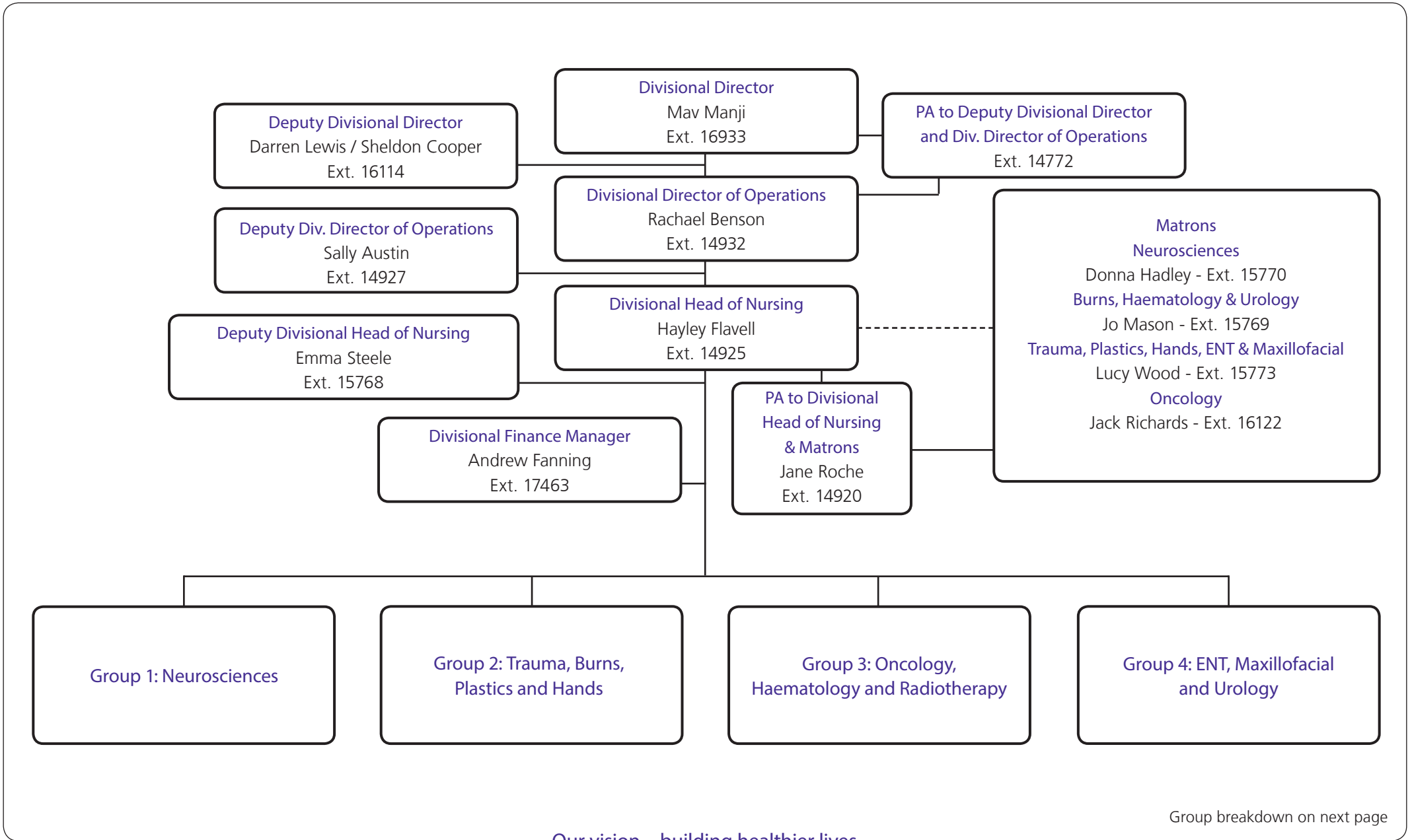




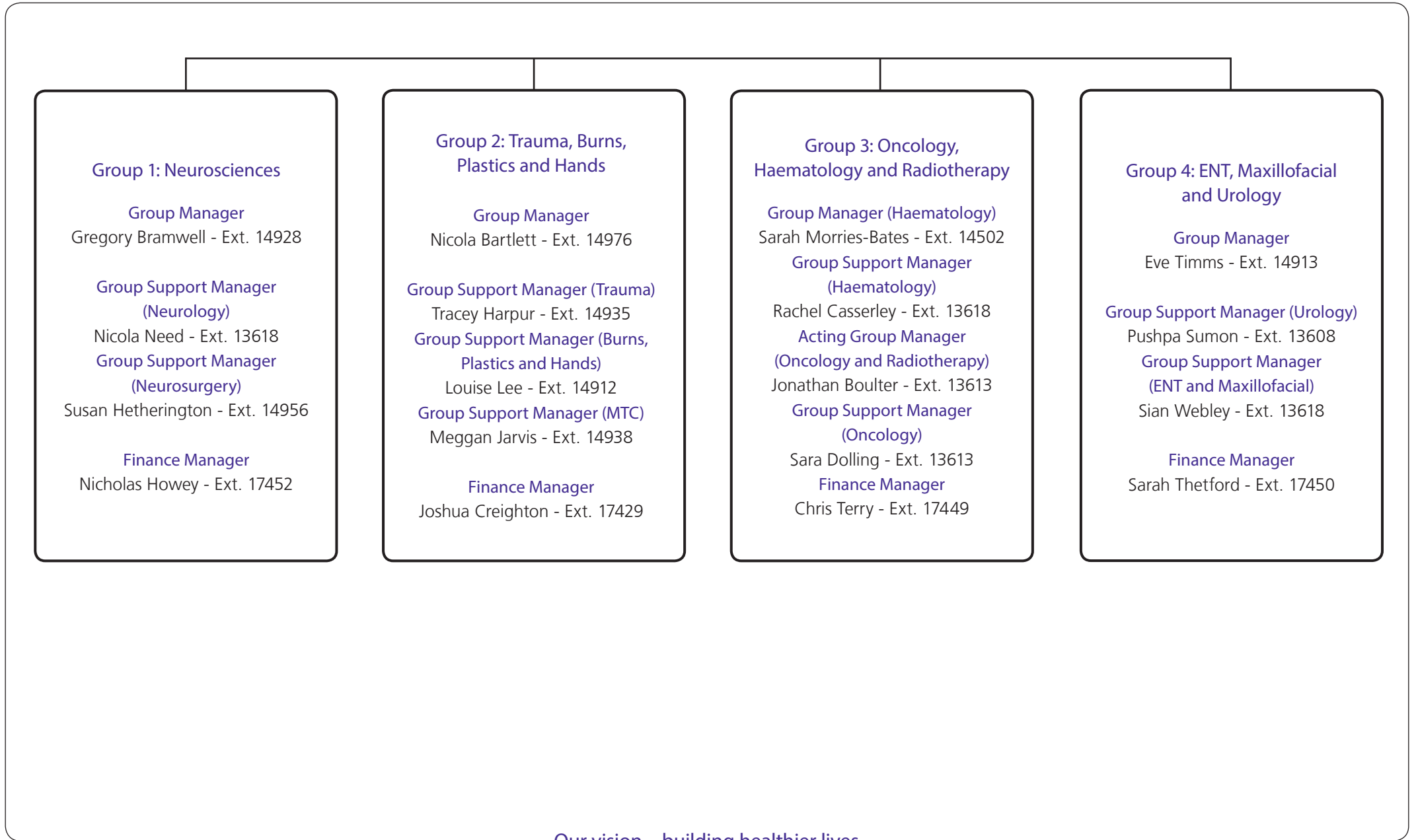
# Trust Structure: QEHB Division D



Group breakdown on next page



# Trust Structure: QEHB Division D - Groups



**Group 1: Neurosciences**

**Group Manager**

Gregory Bramwell - Ext. 14928

**Group Support Manager (Neurology)**

Nicola Need - Ext. 13618

**Group Support Manager (Neurosurgery)**

Susan Hetherington - Ext. 14956

**Finance Manager**

Nicholas Howey - Ext. 17452

**Group 2: Trauma, Burns, Plastics and Hands**

**Group Manager**

Nicola Bartlett - Ext. 14976

**Group Support Manager (Trauma)**

Tracey Harpur - Ext. 14935

**Group Support Manager (Burns, Plastics and Hands)**

Louise Lee - Ext. 14912

**Group Support Manager (MTC)**

Meggan Jarvis - Ext. 14938

**Finance Manager**

Joshua Creighton - Ext. 17429

**Group 3: Oncology, Haematology and Radiotherapy**

**Group Manager (Haematology)**

Sarah Morries-Bates - Ext. 14502

**Group Support Manager (Haematology)**

Rachel Casserley - Ext. 13618

**Acting Group Manager (Oncology and Radiotherapy)**

Jonathan Boulter - Ext. 13613

**Group Support Manager (Oncology)**

Sara Dolling - Ext. 13613

**Finance Manager**

Chris Terry - Ext. 17449

**Group 4: ENT, Maxillofacial and Urology**

**Group Manager**

Eve Timms - Ext. 14913

**Group Support Manager (Urology)**

Pushpa Sumon - Ext. 13608

**Group Support Manager (ENT and Maxillofacial)**

Sian Webley - Ext. 13618

**Finance Manager**

Sarah Thetford - Ext. 17450