



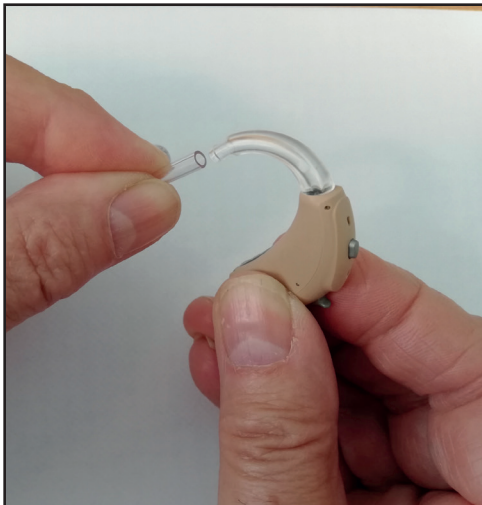
University Hospitals Birmingham
NHS Foundation Trust



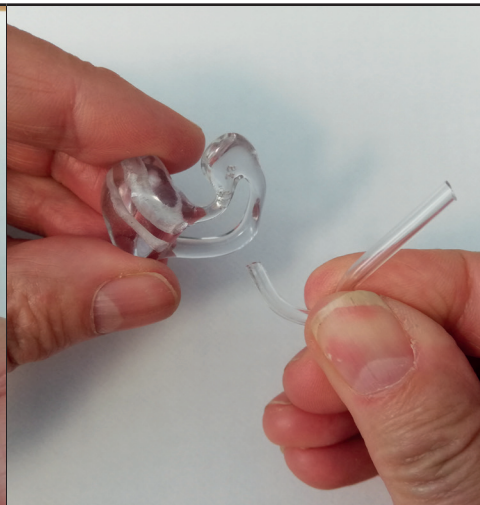
Retubing guide

Building healthier lives

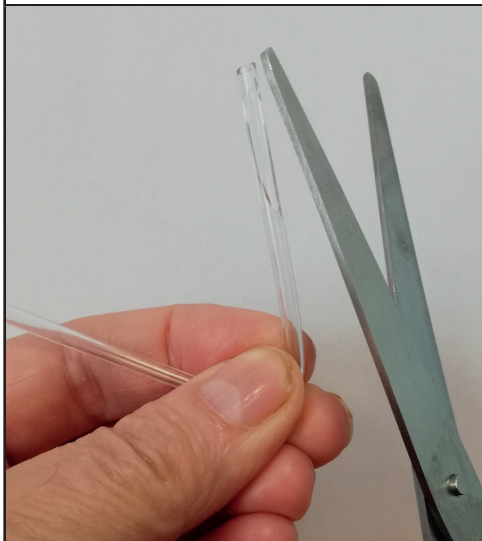
UHB is a no smoking Trust



1. Detach the ear mould from the hearing aid. Twist and pull.



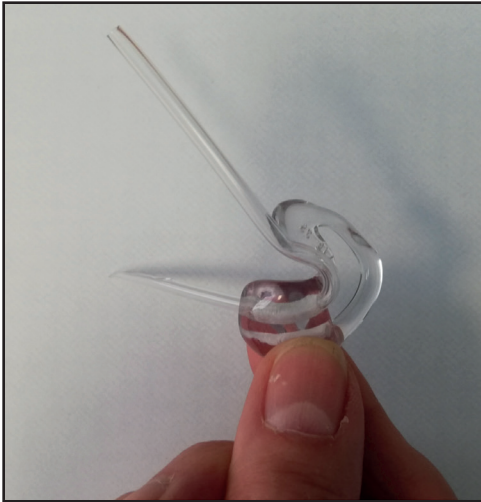
2. Remove the old tube by pulling. **Do not** throw it away, you will need it later.



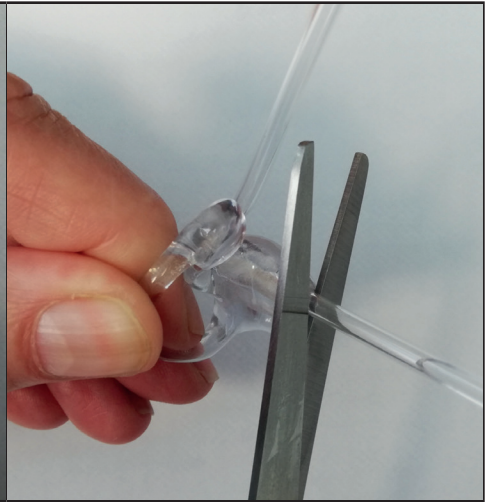
3. Take a piece of U-shaped tubing. Taper one end by trimming the tube in half lengthways for 4cm. Cut a point on the end.



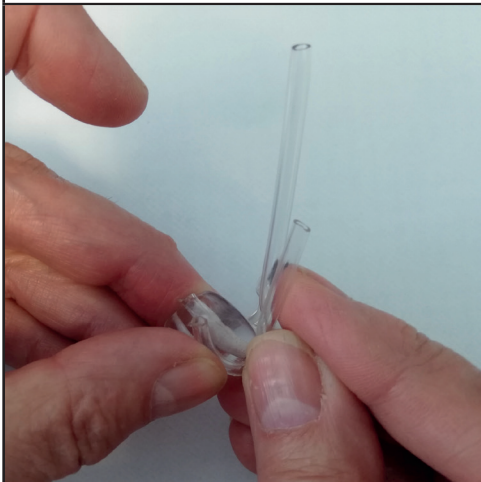
4. From the back of the mould, thread the tapered end through the hole until it emerges at the other end.



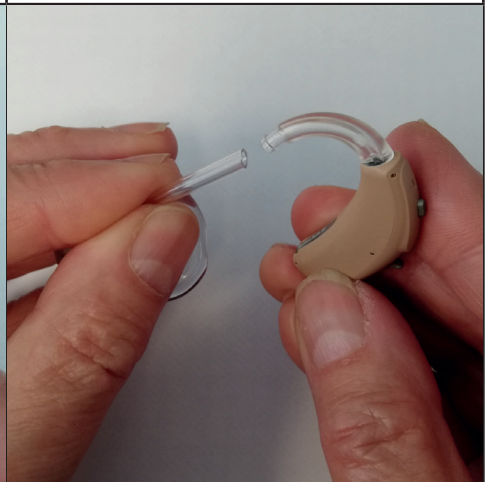
5. Pull the tubing right through until the bend is against the ear mould and the tube stands straight up.



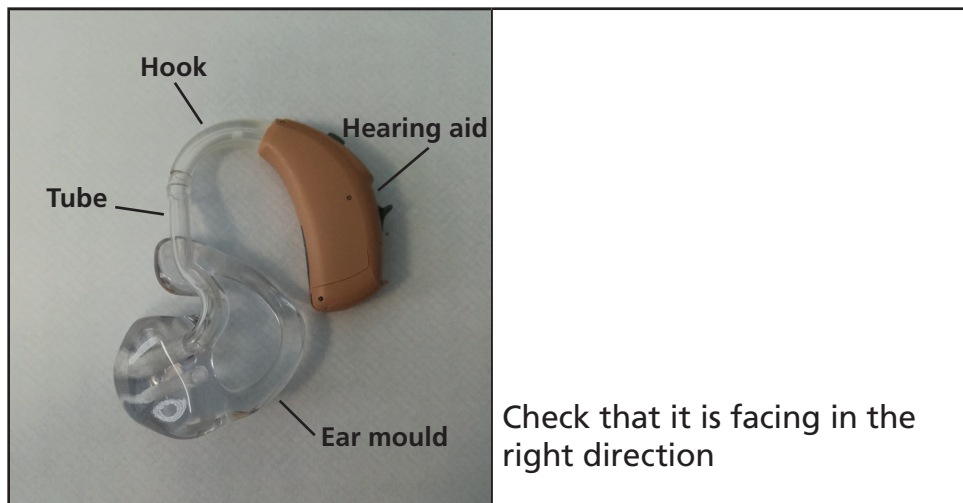
6. Cut the tapered end as close to the ear mould as possible. Make sure this is smooth as it is the part that goes in your ear.



7. Take the old piece of tubing you saved and line it up with the newly threaded tube. Cut the end to the same length.



8. Squeeze the top of the tube and push it onto the hook of the hearing aid, over the ridge.



If you require this information in another format, such as a different language, large print, braille or audio version please ask a member of staff or email **interpreting.service@uhb.nhs.uk**.

Audiology

Queen Elizabeth Hospital Birmingham
Mindelsohn Way, Edgbaston
Birmingham, B15 2GW
Telephone: 0121 371 7100
